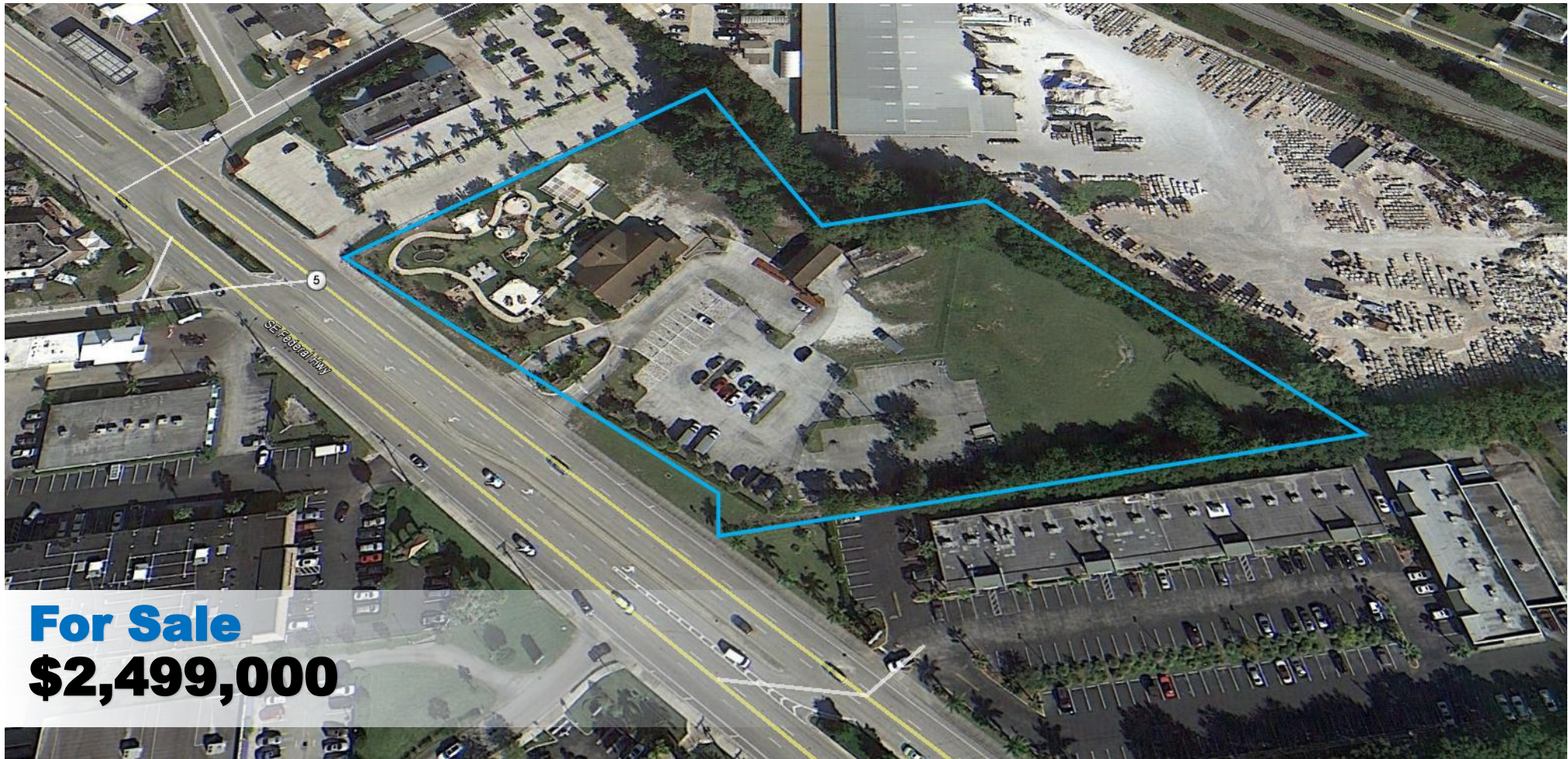


# Jeremiah Baron & CO.

Commercial Real Estate, LLC

## Prime Retail Land

1801 SE Federal Highway, Stuart FL 34994



**For Sale**  
**\$2,499,000**

Listing Agent:  
**Jeremiah Baron**  
**772-528-0506**  
[jbaron@commercialrealestatellc.com](mailto:jbaron@commercialrealestatellc.com)

Office:  
**49 SW Flagler Ave. Suite 301**  
**Stuart FL, 34994**  
**772-286-5744**

## Disclaimer Statement

This information has been prepared only for information purposes to assist a potential buyer in determining whether it wishes to proceed with an in-depth investigation of the property and/or business. Seller and any of its officers, employees or agents specifically disclaims any representation or warranty, express or implied, as to the accuracy or completeness of the offering materials or any accompanying information, and no legal commitment, obligation or liability of Seller or its officers, employees or agents shall arise by reason of the materials or accompanying information. Interested parties are expected to review independently all documents relating the property/business and the purchase. The property/business is being sold on as "AS IS, WHERE IS" and "WITH ALL FAULTS" basis. Your complete inspection of the property/business is recommended. Buyers will have an opportunity to examine the financial and legal documents, records, files and information relating to the property now in the possession of Seller, its agents or contractors. The purchase of this property will be based solely on a Buyer's own independent investigation and findings and not in reliance on any information provided by Seller, its agent or contractors. Seller, its agents or contractors shall have no liability for any incorrect information.

Seller reserves the right at all times to reject, in its sole and absolute discretion, any and all offers received by it, for any reason whatsoever, notwithstanding that a particular offer is for the highest purchase price among those offers received and meets all the terms and conditions of this offering. Seller also reserves the right at all times to waive any or all technical defects in any offers, in Seller's sole and absolute discretion. The sales process may be terminated or modified without notice at any time. In the event two or more offers are determined to fall within a competitive range, Seller reserves the right to request a best and final offer from those parties.

Listing Agent:

**Jeremiah Baron**

**772-528-0506**

**[jbaron@commercialrealestatellc.com](mailto:jbaron@commercialrealestatellc.com)**

Office:

**49 SW Flagler Ave. Suite 301**

**Stuart FL, 34994**

**772-286-5744**



## Property Details

<b>Location:</b>	1801 SE Federal Highway, Stuart FL 34994
<b>Price:</b>	\$2,499,000
<b>Building Size:</b>	325 SF / 3,716 SF
<b>Building Type:</b>	Retail
<b>Acreage:</b>	4.06 AC
<b>Frontage:</b>	375'
<b>Traffic Count:</b>	33,000 average daily traffic
<b>Year Built:</b>	1992
<b>Construction Type:</b>	Undisclosed
<b>Parking Spaces:</b>	Plenty
<b>Zoning:</b>	B2 - Business General (Stuart)
<b>Land Use:</b>	Commercial
<b>Utilities:</b>	Undisclosed (City of Stuart)
<b>NOI:</b>	\$136,000
<b>CAP:</b>	5.4

Great opportunity to purchase over 4 acres of prime US 1 land in the heart of the Stuart retail trade area. Enjoy a steady cash flow while you plan the perfect development and increasing your net income by over 8,000 per month by converting the South acre to outdoor storage. \*Possible owner financing\*

Located on SE Federal Highway, before SE Monterey Road.



Listing Agent:  
**Jeremiah Baron**  
**772-528-0506**  
[jbaron@commercialrealestatellc.com](mailto:jbaron@commercialrealestatellc.com)

Office:  
**49 SW Flagler Ave. Suite 301**  
**Stuart FL, 34994**  
**772-286-5744**

## Property Demographics

### 2015 Demographics

#### Population (Daytime)

1 mile	8,166
3 mile	37,221
5 mile	82,501

#### Average Household Income

1 mile	\$55,370
3 mile	\$72,446
5 mile	\$76,093

#### Median Age

1 mile	39
3 mile	48
5 mile	50

Listing Agent:

**Jeremiah Baron**

**772-528-0506**

**jbaron@commercialrealestatellc.com**

Office:

**49 SW Flagler Ave. Suite 301**

**Stuart FL, 34994**

**772-286-5744**

Income & Expense

Gross Income	\$168,000
RE Taxes	\$21,000
Insurance	\$6,000
Miscellaneous	\$5,000
<b>NOI</b>	<b>\$136,000</b>

Listing Agent:

**Jeremiah Baron**

**772-528-0506**

**jbaron@commercialrealestatellc.com**

Office:

**49 SW Flagler Ave. Suite 301**

**Stuart FL, 34994**

**772-286-5744**

## Zoning & Future Land Use Map

Business <sup>1</sup> and PUD Districts Uses	B-1	B-2	B-3	B-4	CPUD <sup>4</sup>	MXPUD <sup>5</sup>
Adult businesses		S			A	A
Animal Hospital		P			A	A
Any retail business or retail service establishment, including shops for making articles of an artisanal use to be sold on the premises, provided such manufacturing is incidental to the retail business or service	P	P			A	A
Art galleries	P	P			A	A
Auto sales provided all repair and service shall be done within an enclosed building		P			A	A
Bakeries		P		P	A	A
Banks	P	P		P	A	A
Barber	P	P			A	A
Bars	P	P			A	A
Beauty shops	P	P			A	A
Beer garden	P	P			A	A
Boat building					A	
Bowling alleys		P			A	A
Bus terminals		P			A	A
Business	P	P		P	A	A
Business warehouse facilities in conjunction with adjacent commercial and retail uses				P		A
Cabinet shops		P			A	A
Cemeteries		P			A	A
Child care center <sup>2</sup>	P	P	P	S	A	A
Clinics		P			A	A
Clubs (membership), lodges, and fraternal organizations		P			A	A
Cocktail lounge	P	P			A	A
Concrete or asphalt processing plants						
Day care center <sup>2</sup>	P	P	P		A	A
Drive -in restaurants	P	P			A	A
Drive-in theaters	P	P			A	A
Enclosed garages and repair shops for motor vehicles		P		P	A	A
Enclosed repair shops for repairing furniture, or appliances powered by gas, oil, electricity, etc., without outdoor storage		P		P	A	A
Enclosed sales of farm and heavy equipment without outdoor storage		P		P	A	A

### B-2 - Business General

Any and all uses set forth in the present zoning classifications of R-1, R-2, R-3, B-1, B-2 and B-4 inclusive, providing such uses are compatible with uses on adjacent property as determined by the City Commission.



**B-2 BUSINESS - GENERAL**

Listing Agent:

**Jeremiah Baron**

**772-528-0506**

**jbaron@commercialrealestatellc.com**

Office:

**49 SW Flagler Ave. Suite 301**

**Stuart FL, 34994**

**772-286-5744**

# Jeremiah Baron & CO.

Commercial Real Estate, LLC

## Prime Retail Land

1801 SE Federal Highway, Stuart FL 34994

### Additional Permitted Uses

Business <sup>1</sup> and PUD Districts Uses	B-1	B-2	B-3	B-4	CPUD <sup>4</sup>	MXPUD <sup>5</sup>
Enclosed sales of seeds, insecticide, and growers supplies without outdoor storage		P		P	A	A
Enclosed sign painting and/or sign manufacturing shops without outdoor storage		P		P	A	A
Enclosed storage and sales of lumber and building materials		P		P	A	A
Funeral homes		P			A	A
Gasoline or other motor fuel stations		P			A	A
Health spas		P			A	A
Heavy industrial manufacturing operations which are determined to be harmful to health, safety or welfare based on substantial noise, smoke, dust, cold, radiation emissions, glare, night illumination, vibrations, smell, risk of spills, fires, explosions, or other physical hazards						
Hotels	P	P			A	A
Kennels		P			A	A
Kindergarten <sup>2</sup>	P	P	P		A	A
Laundries and dry cleaning establishments using non-combustible solvents		P		P	A	A
Limited indoor industrial uses, including fabrication, processing, converting, altering, assembling, dismantling, cleaning, servicing, freezing, treatment, distribution, repair, finishing, testing, or other handling of components, devices, equipment, and products				P		A
Limited restaurants intended to serve businesses in the local vicinity with a maximum seating capacity of not more than 30				P		A
Major auto repair						
Marinas including the sale, display, and storage of new and used boats for sale, and the repair and maintenance of boats.	P	P			A	A
Mini-warehouses for the storage of residential items				P		A
Mortuaries		P			A	A
Motels	P	P			A	A
Motion picture houses	P	P			A	A
Multi-family residences	P					A
Nursery school <sup>2</sup>	P	P	P		A	A
Operation of a residence as a family day care home <sup>2</sup>	P	P			A	A
Outdoor storage which exceeds ten percent of the facility's indoor floor area						

Business <sup>1</sup> and PUD Districts Uses	B-1	B-2	B-3	B-4	CPUD <sup>4</sup>	MXPUD <sup>5</sup>
Parking garages	P	P			A	A
Parking lots	P	P			A	A
Parks <sup>3</sup>				P	A	A
Preschool learning center <sup>2</sup>	P	P	P		A	A
Printing shops				P		A
Professional offices	P	P	P	P	A	A
Pub	P	P			A	A
Public buildings	P	P			A	A
Public facilities <sup>3</sup>				P	A	A
Public utilities <sup>3</sup>				P	A	A
Radio and/or television broadcast stations		P		P	A	A
Recreational facilities		P		P	A	A
Research facilities				P		A
Residential units combined with non-residential uses	P	P	P		A	A
Restaurants	P	P			A	A
Retail warehouse sales and service for non-intensive uses				P		A
Rolling rinks		P			A	A
School-private, parochial, technical, etc.	P	P			A	A
Slaughter houses						
Stealth telecommunications facilities in excess of 45 feet in height	S	S		S	A	A
Stealth telecommunications facilities which do not exceed 45 feet in height or which are constructed as part of an existing architectural feature or structure provided its total height does not exceed 120 percent of the height of the architectural feature or structure	P	P		P	A	A
Telecommunications towers		S		S	A	A
Theatres	P	P			A	A
Tourist homes	P	P			A	A
Uses which require the issuance of occupational licenses for businesses operating from mini-warehouse facilities						
Veterinarians		P			A	A
Wholesale or commercial bakery warehouses		P		P	A	A
Wrecking or salvage yards						

Listing Agent:

Jeremiah Baron

772-528-0506

jbaron@commercialrealestatellc.com

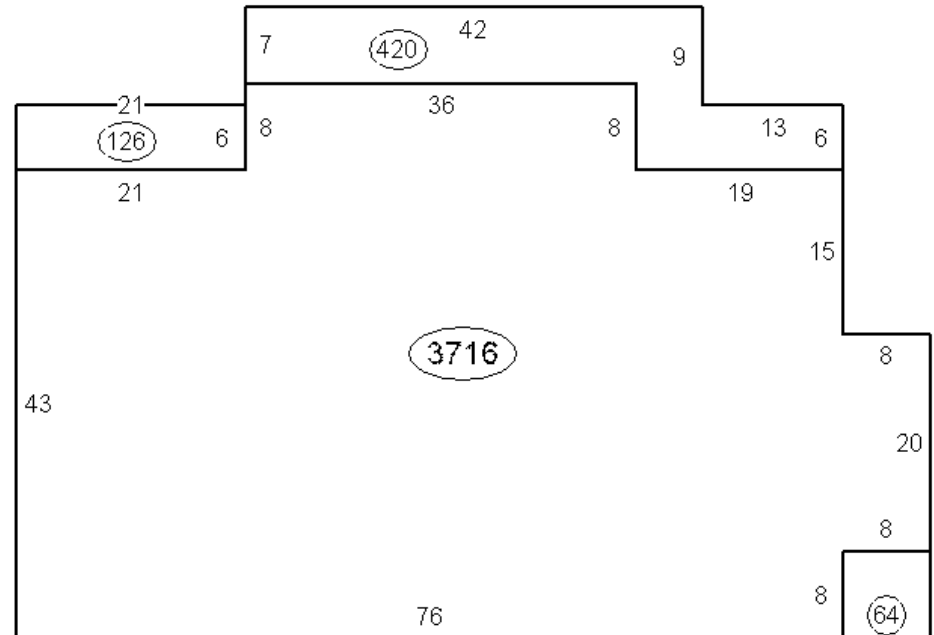
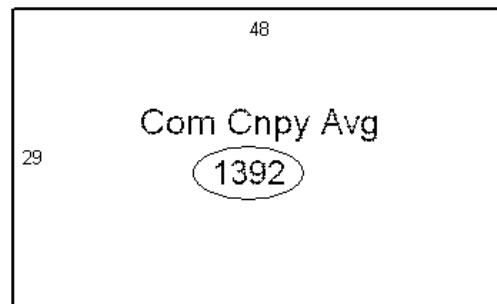
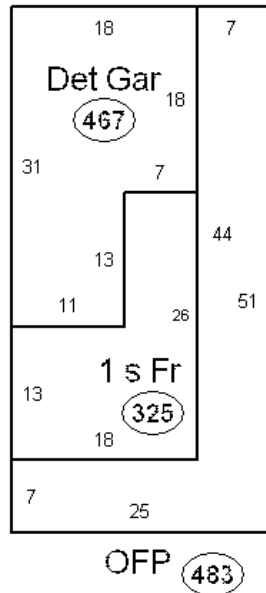
Office:

49 SW Flagler Ave. Suite 301

Stuart FL, 34994

772-286-5744





Listing Agent:

**Jeremiah Baron**

**772-528-0506**

**jbaron@commercialrealestatellc.com**

Office:

**49 SW Flagler Ave. Suite 301**

**Stuart FL, 34994**

**772-286-5744**



**Jeremiah Baron  
& CO.**

**Commercial Real Estate, LLC**

**Prime Retail Land**

1801 SE Federal Highway, Stuart FL 34994

Property Aerial



Listing Agent:

**Jeremiah Baron**

**772-528-0506**

**jbaron@commercialrealestatellc.com**

Office:

**49 SW Flagler Ave. Suite 301**

**Stuart FL, 34994**

**772-286-5744**