

**Jeremiah Baron
& CO.**

Commercial Real Estate, LLC

Showroom Space

8243 Business Park Dr. Port St. Lucie FL 34952



For Lease
\$7.95/psf

Listing Agent:

Jeff Baron

772-530-3701

jeff@commercialrealestatellc.com

Office:

49 SW Flagler Ave. Suite 301

Stuart FL, 34994

772-286-5744

Jeremiah Baron
& CO.

Commercial Real Estate, LLC

Showroom Space

8243 Business Park Dr. Port St. Lucie FL 34952

Disclaimer Statement

This information has been prepared only for information purposes to assist a potential buyer in determining whether it wishes to proceed with an in-depth investigation of the property and/or business. Seller and any of its officers, employees or agents specifically disclaims any representation or warranty, express or implied, as to the accuracy or completeness of the offering materials or any accompanying information, and no legal commitment, obligation or liability of Seller or its officers, employees or agents shall arise by reason of the materials or accompanying information. Interested parties are expected to review independently all documents relating the property/business and the purchase. The property/business is being sold on as "AS IS, WHERE IS" and "WITH ALL FAULTS" basis. Your complete inspection of the property/business is recommended. Buyers will have an opportunity to examine the financial and legal documents, records, files and information relating to the property now in the possession of Seller, its agents or contractors. The purchase of this property will be based solely on a Buyer's own independent investigation and findings and not in reliance on any information provided by Seller, its agent or contractors. Seller, its agents or contractors shall have no liability for any incorrect information.

Seller reserves the right at all times to reject, in its sole and absolute discretion, any and all offers received by it, for any reason whatsoever, notwithstanding that a particular offer is for the highest purchase price among those offers received and meets all the terms and conditions of this offering. Seller also reserves the right at all times to waive any or all technical defects in any offers, in Seller's sole and absolute discretion. The sales process may be terminated or modified without notice at any time. In the event two or more offers are determined to fall within a competitive range, Seller reserves the right to request a best and final offer from those parties.

Listing Agent:

Jeff Baron

772-530-3701

jeff@commercialrealestatellc.com

Office:

49 SW Flagler Ave. Suite 301

Stuart FL, 34994

772-286-5744

Property Details

Location:	8243 Business Park Dr. Port St. Lucie FL 34952
Lease Rate:	\$7.95/psf
Lease Space:	1,000 SF
Building Type:	Flex Showroom
Acreage:	1.94 AC
Frontage:	340'
Year Built:	1990
Construction Type:	CBS
Parking Spaces:	70+
Zoning:	PNRD
Land Use:	Warehouse
Subdivision Name:	St. Lucie Business Park

The St. Lucie Business Park has one 1,000 SF space available ideal for a merchandise showroom or open floor plan office. Excellent parking area, easily accessible from US Highway 1. Space will lease quickly!!



Listing Agent:

Jeff Baron

772-530-3701

jeff@commercialrealestatellc.com

Office:

49 SW Flagler Ave. Suite 301

Stuart FL, 34994

772-286-5744

Property Demographics

2016 Demographics

Total Population

1 mile	5,380
3 mile	57,601
5 mile	128,623

Average Household Income

1 mile	\$44,578
3 mile	\$48,220
5 mile	\$55,114

Average Age

1 mile	56.00
3 mile	43.40
5 mile	43.40

Listing Agent:

Jeff Baron

772-530-3701

jeff@commercialrealestatellc.com

Office:

49 SW Flagler Ave. Suite 301

Stuart FL, 34994

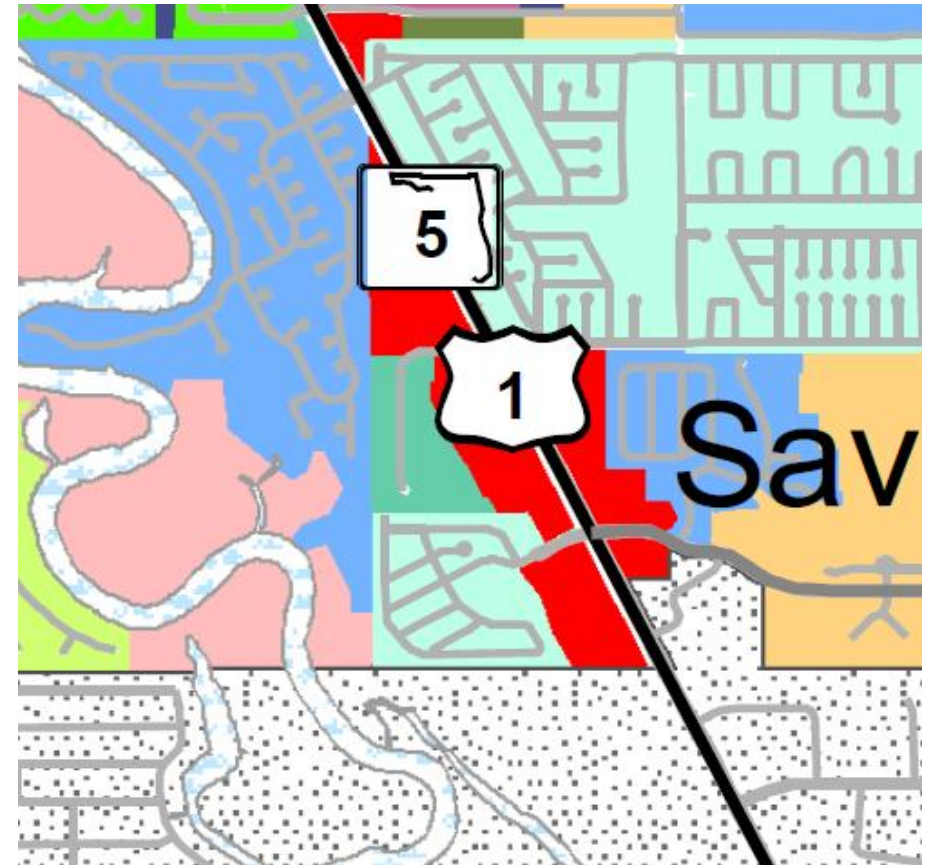
772-286-5744

PNRD - Planned Non-Residential Development

7.02.02. - Permitted Uses.

B. For properties located in any Commercial or Industrial classified land use area: Any permitted, conditional or accessory use, including any standards, conditions and requirements for those uses, as identified in the Commercial, Neighborhood (CN); Commercial, Office (CO); Commercial, General (CG); Commercial Resort (CR); Industrial Light (IL); Industrial Heavy (IH), Utility (U) and (I) Institutional zoning districts, and any non-residential permitted or accessory use identified in the Agriculture-1 (AG-1), Agricultural-2.5 (AG-2.5), or Agricultural-5 (AG-5) zoning districts of this Code. Telecommunication towers must comply with the requirements of Section 7.10.23

The general standards, conditions and requirements, as found in this Code, that pertain to conditional and accessory uses shall be used in the determination of the compatibility of the proposed use(s) with the surrounding land uses in the review of the Planned Nonresidential Development. All applications for Planned Nonresidential Development shall include a complete identification of all planned uses and activities.



PNRD, Planned Non-Residential Development

Listing Agent:

Jeff Baron

772-530-3701

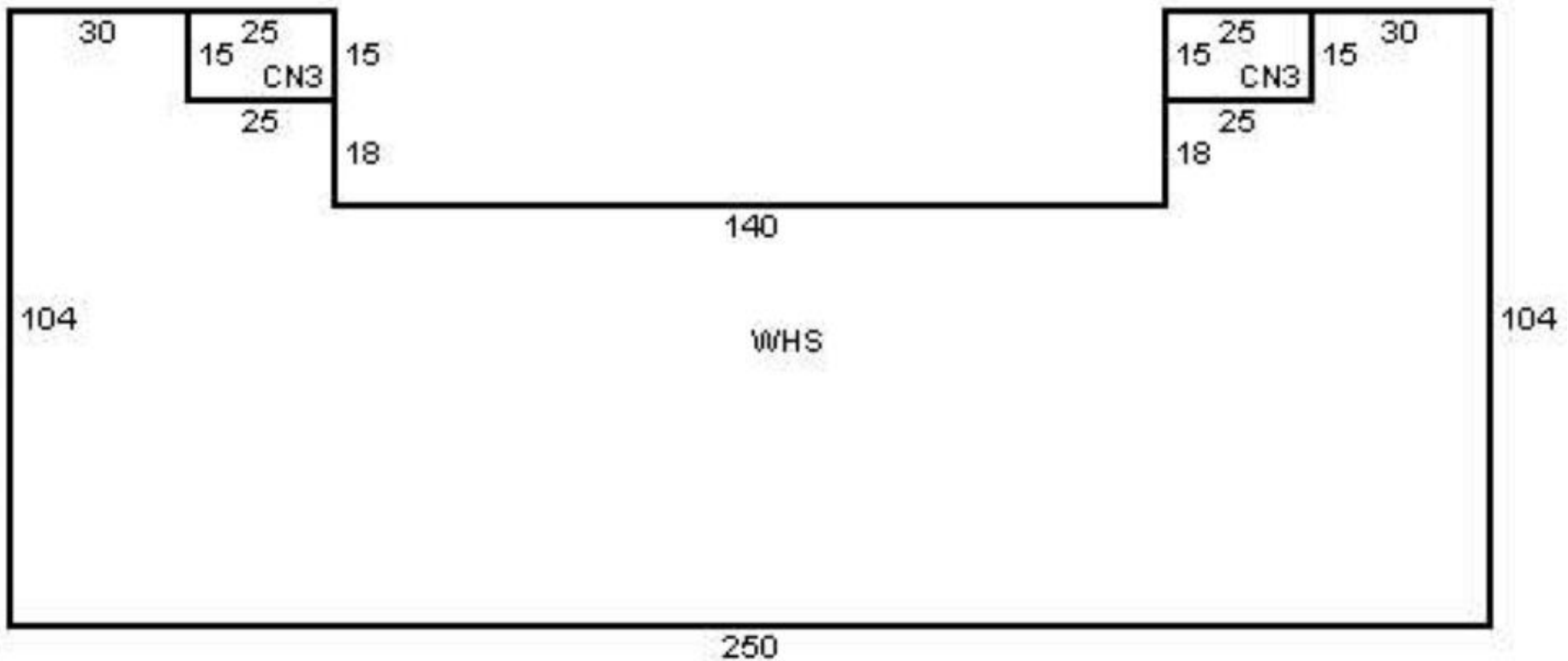
jeff@commercialrealestatellc.com

Office:

49 SW Flagler Ave. Suite 301

Stuart FL, 34994

772-286-5744



Listing Agent:

Jeff Baron

772-530-3701

jeff@commercialrealestatellc.com

Office:

49 SW Flagler Ave. Suite 301

Stuart FL, 34994

772-286-5744

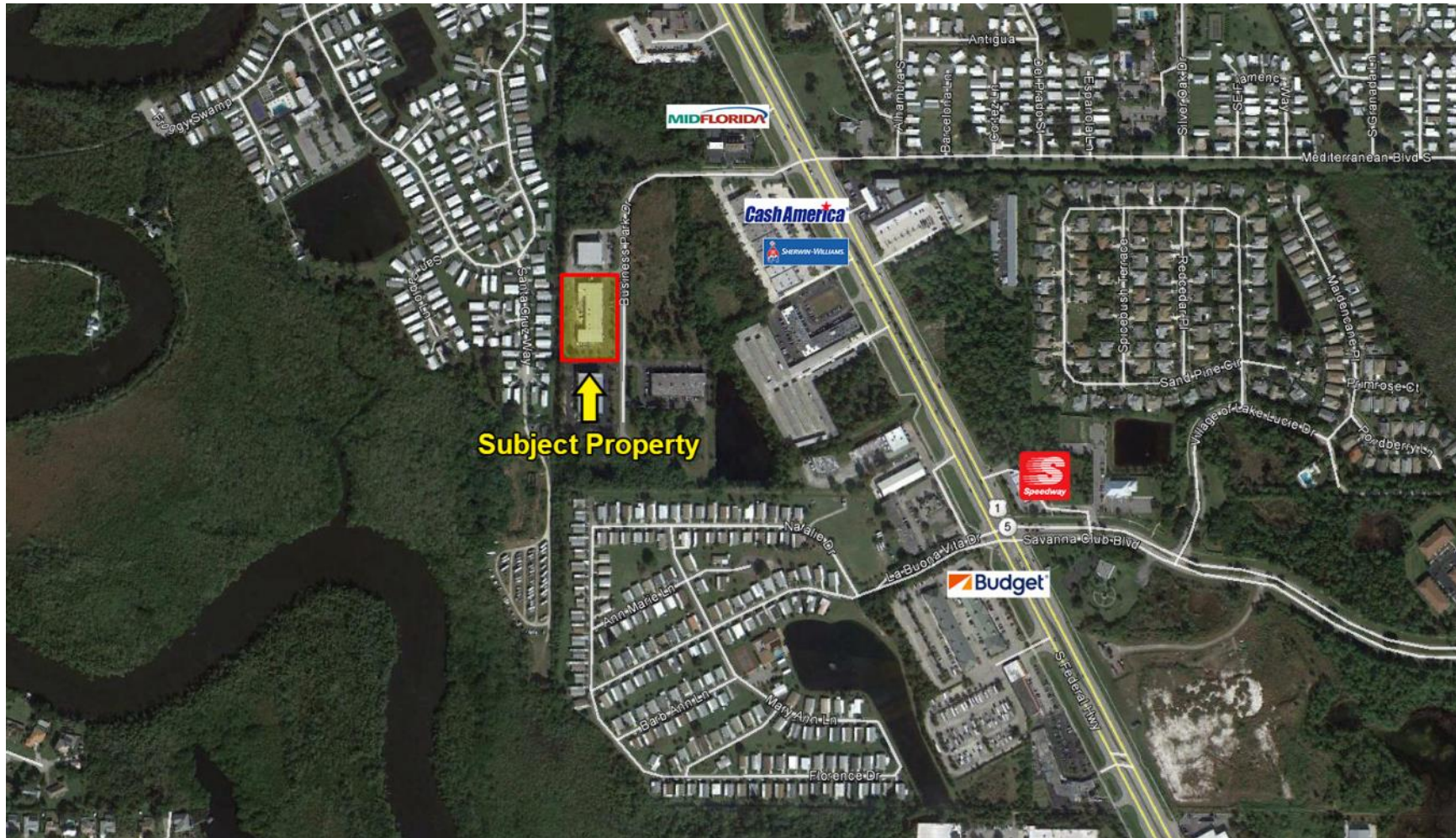
**Jeremiah Baron
& CO.**

Commercial Real Estate, LLC

Showroom Space

8243 Business Park Dr. Port St. Lucie FL 34952

Property Aerial



Listing Agent:

Jeff Baron

772-530-3701

jeff@commercialrealestatellc.com

Office:

49 SW Flagler Ave. Suite 301

Stuart FL, 34994

772-286-5744