

FOR LEASE

\$15.00/psf

Retail Space at Gardens Plaza

10987 S US Highway 1, Port St. Lucie FL 34952



Jeremiah Baron
& CO.

Commercial Real Estate, LLC

Listing Contact:

Tim Tully | 305-834-0816 | Ttully@commercialrealestatellc.com

Office: 49 SW Flagler Ave. Suite 301 Stuart FL, 34994 | 772-286-5744

Property Details

Retail Space at Gardens Plaza

10987 S US Highway 1, Port St. Lucie FL 34952

LEASE RATE	\$15.00/psf
LEASE SPACE	1,820 sf
BUILDING TYPE	Commercial
ACREAGE	0.45 AC
FRONTAGE	308.01
TRAFFIC COUNT	68,203
YEAR BUILT	1956 (2015 renovations)
CONSTRUCTION TYPE	CBS
ZONING	CG - General Commercial
LAND USE	Commercial
UTILITIES	Undisclosed

ONE SPACE AVAILABLE! Brand new exterior with easy on/easy off access to Hwy 1. Superior signage on busy portion of US 1 near Walmart and Sam's Club with traffic counts as high as 80,000/day. Fresh & modern facade with new impact windows and doors. Utilities included: Water, Sewer, and Trash. An absolute must see!!



NO WARRANTY OR REPRESENTATION, EXPRESS OR IMPLIED, IS MADE AS TO THE ACCURACY OF THE INFORMATION CONTAINED HEREIN, AND THE SAME IS SUBMITTED SUBJECT TO ERRORS, OMISSIONS, CHANGE OF PRICE, RENTAL OR OTHER CONDITIONS, PRIOR SALE, LEASE OR FINANCING, OR WITHDRAWAL WITHOUT NOTICE, AND OF ANY SPECIAL LISTING CONDITIONS IMPOSED BY OUR PRINCIPALS NO WARRANTIES OR REPRESENTATIONS ARE MADE AS TO THE CONDITION OF THE PROPERTY OR ANY HAZARDS CONTAINED THEREIN ARE ANY TO BE IMPLIED.

Jeremiah Baron
& CO.
Commercial Real Estate, LLC

Listing Contact:

Tim Tully | 305-834-0816 | Ttully@commercialrealestatellc.com

Office: 49 SW Flagler Ave. Suite 301 Stuart FL, 34994 | 772-286-5744

Property Demographics

Retail Space at Gardens Plaza

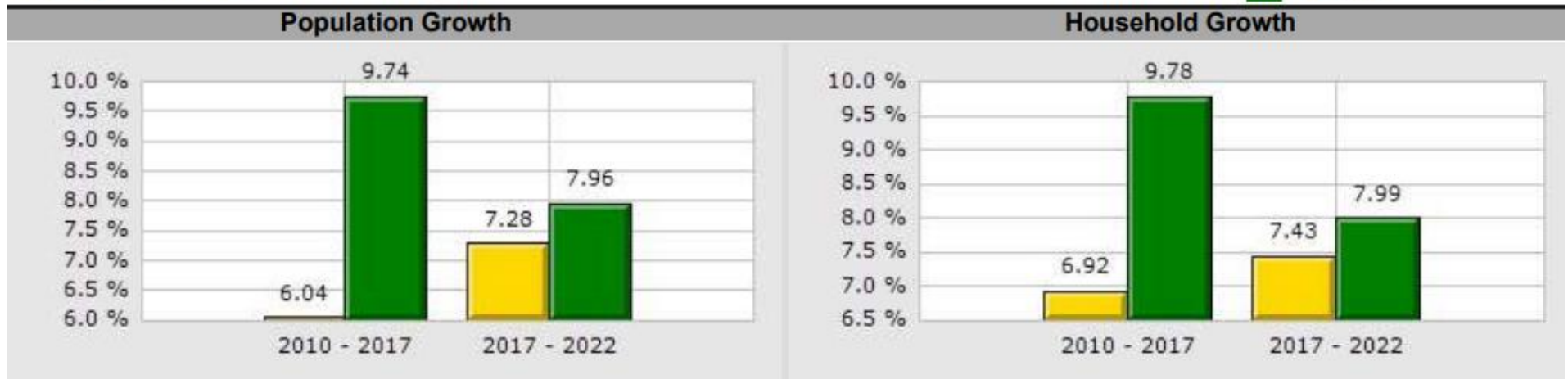
10987 S US Highway 1, Port St. Lucie FL 34952

2017 Demographics

Total Population		Average Household Income		Average Age	
1 Mile	5,111	1 Mile	\$72,123	1 Mile	47.60
3 Mile	41,145	3 Mile	\$61,700	3 Mile	44.70
5 Mile	108,950	5 Mile	\$62,912	5 Mile	45.90

Type: **Retail/Storefront Retail/Office**
 County: **St Lucie**

 **1 Mile**
 **County**



Jeremiah Baron
 & CO.

Commercial Real Estate, LLC

Listing Contact:

Tim Tully | 305-834-0816 | Ttully@commercialrealestatellc.com

Office: 49 SW Flagler Ave. Suite 301 Stuart FL, 34994 | 772-286-5744

Zoning Information

Retail Space at Gardens Plaza

10987 S US Highway 1, Port St. Lucie FL 34952

Sec. 158.124. - General Commercial Zoning District (CG).

(A) **Purpose.** The purpose of the general commercial zoning district (CG) shall be to locate and establish areas within the City which are deemed to be uniquely suited for the development and maintenance of general commercial facilities. Said areas to be primarily along established highways where a mixed pattern of commercial usage is substantially established; to designate those uses and services deemed appropriate and proper for location and development standards and provisions as are appropriate to ensure proper development and functioning of uses within the district. This district incorporates most of those uses formerly designated shopping center commercial (CSC) and resort commercial (CR).

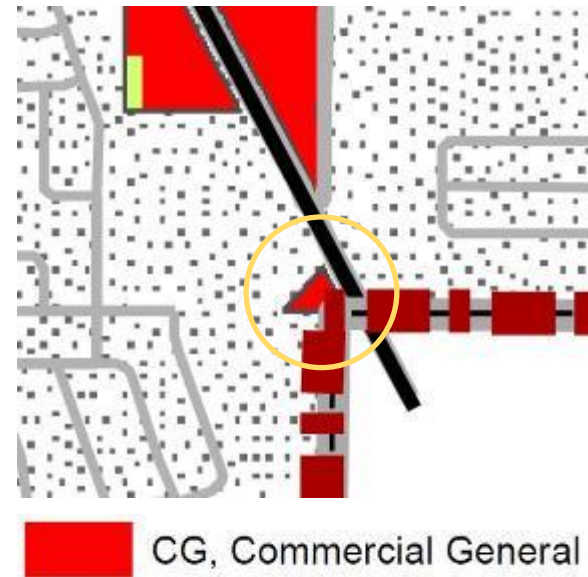
(B) **Permitted Principal Uses and Structures.** The following principal uses and structures are permitted:

- (1) Any retail, business, or personal service use (including repair of personal articles, furniture, and household appliances) conducted wholly within an enclosed building, where repair, processing, or fabrication of products is clearly incidental to and restricted to on-premises sales;
- (2) Horticultural nursery, garden supply sales;
- (3) Office for administrative, business, or professional use;
- (4) Public facility or use;
- (5) Restaurants;

(6) Retail sales of alcoholic beverages for incidental on and off premises consumption in accordance with Chapter 110;

(7) Park or playground or other public recreation;

(8) Motel, hotel, or motor lodge



Jeremiah Baron
& CO.
Commercial Real Estate, LLC

Listing Contact:

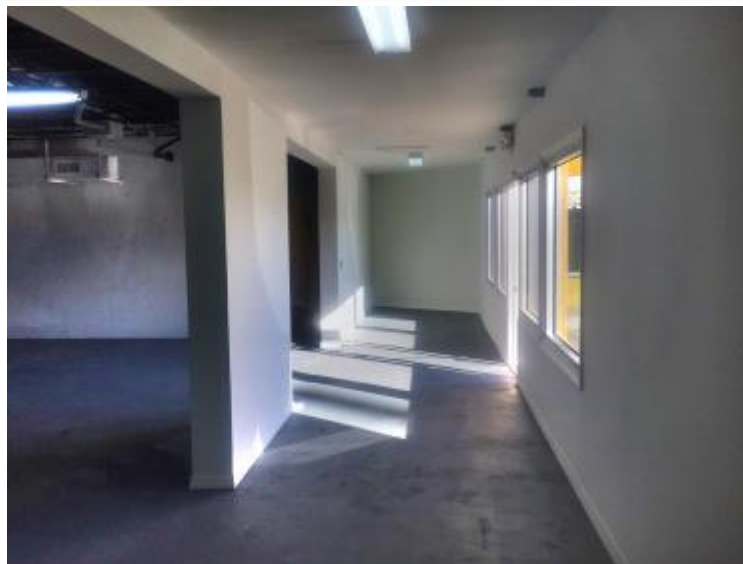
Tim Tully | 305-834-0816 | Ttully@commercialrealestatellc.com

Office: 49 SW Flagler Ave. Suite 301 Stuart FL, 34994 | 772-286-5744

Interior Photos

Retail Space at Gardens Plaza

10987 S US Highway 1, Port St. Lucie FL 34952



Jeremiah Baron
& CO.

Commercial Real Estate, LLC

Listing Contact:

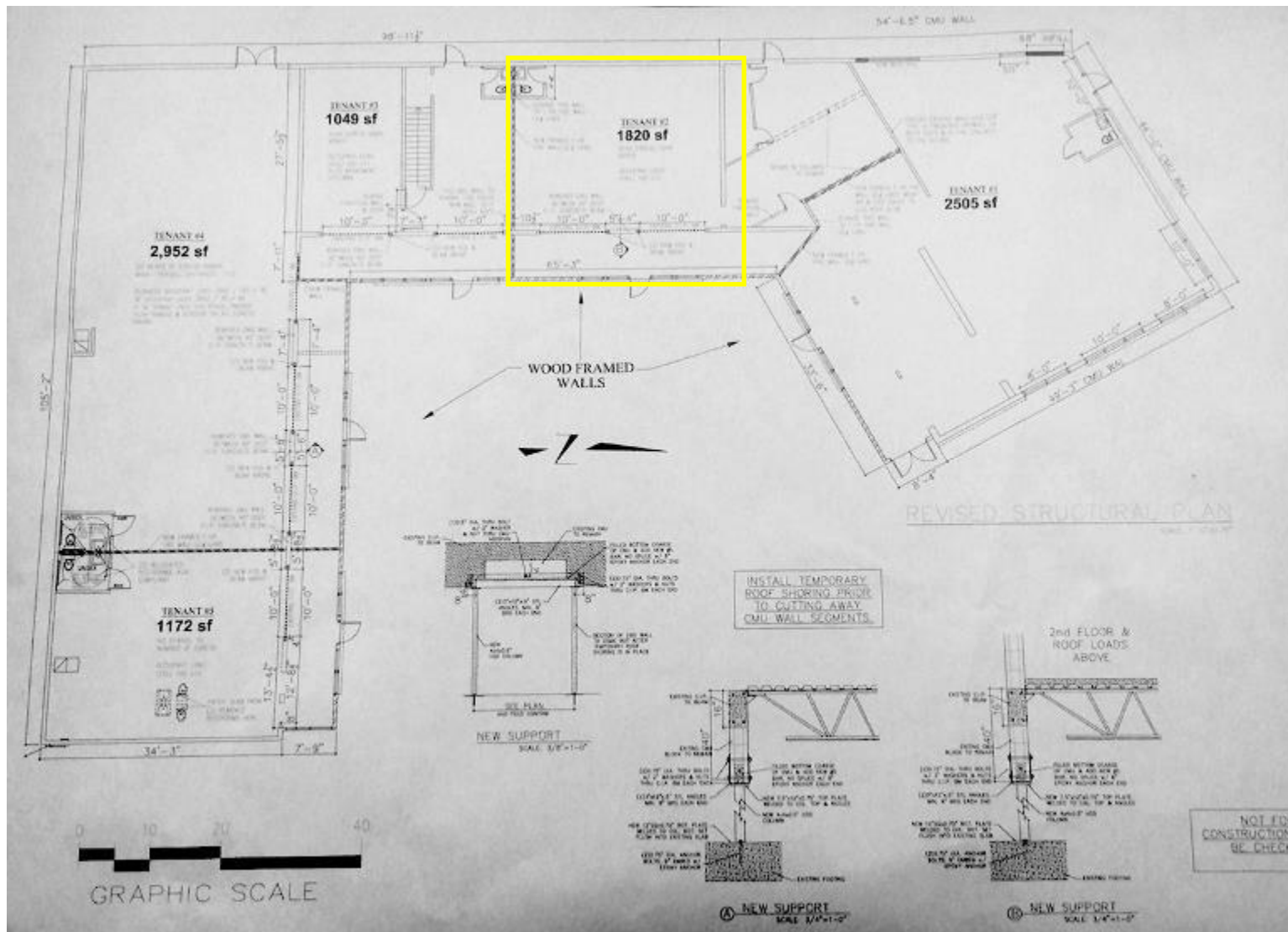
Tim Tully | 305-834-0816 | Ttully@commercialrealestatellc.com

Office: 49 SW Flagler Ave. Suite 301 Stuart FL, 34994 | 772-286-5744

Site Plan

Retail Space at Gardens Plaza

10987 S US Highway 1, Port St. Lucie FL 34952



Jeremiah Baron
& CO.

Commercial Real Estate, LLC

Listing Contact:

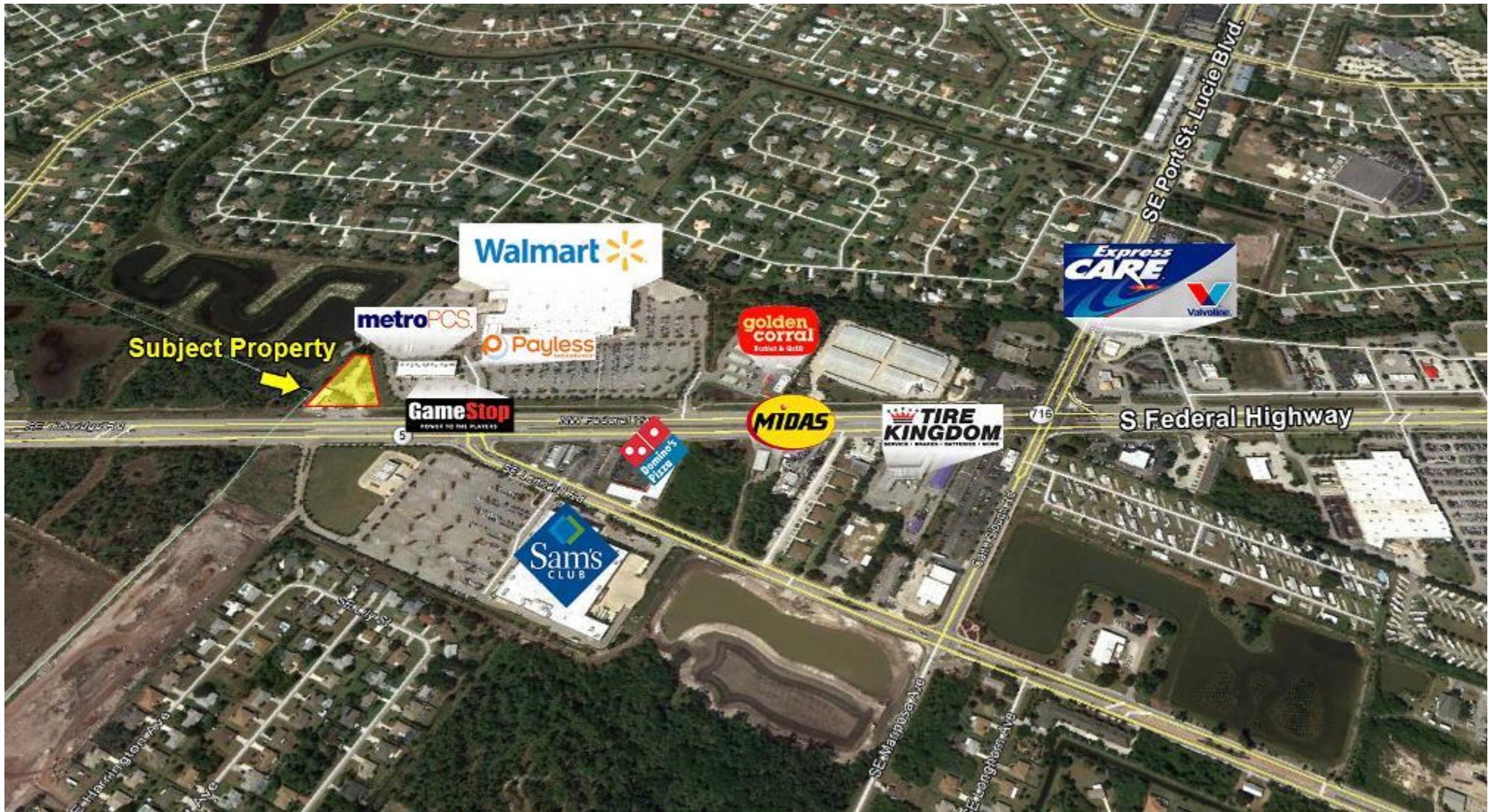
Tim Tully | 305-834-0816 | Ttully@commercialrealestatellc.com

Office: 49 SW Flagler Ave. Suite 301 Stuart FL, 34994 | 772-286-5744

Property Aerial

Retail Space at Gardens Plaza

10987 S US Highway 1, Port St. Lucie FL 34952



Jeremiah Baron
& CO.

Commercial Real Estate, LLC

Listing Contact:

Tim Tully | 305-834-0816 | Ttully@commercialrealestatellc.com

Office: 49 SW Flagler Ave. Suite 301 Stuart FL, 34994 | 772-286-5744