

FOR LEASE

\$14.00/psf Gross

Professional Office Condo

8493 S US Highway 1, Port St. Lucie FL 34952

SPACE AVAILABLE



Jeremiah Baron
& CO.

Commercial Real Estate, LLC

Listing Contact:

Alex Rodriguez-Torres | 772-353-0638 | Rteincorporated@aol.com

Office: 49 SW Flagler Ave. Suite 301 Stuart FL, 34994 | 772-286-5744

Property Details

Professional Office Condo

8493 S US Highway 1, Port St. Lucie FL 34952

LEASE RATE	\$14.00/psf Gross
UNIT SIZE	931 sf
BUILDING TYPE	Office Condo
FRONTAGE	250'
TRAFFIC COUNT	54,340 ADT
YEAR BUILT	1976
CONSTRUCTION TYPE	CBS
PARKING SPACE	50+
ZONING	CG
LAND USE	Commercial
UTILITIES	Undisclosed

The PSL Professional Center has an exceptional and spacious condo space available for lease. The unit features a reception area, wheelchair accessible restrooms, break room, and individual offices. Ideal for a financial, insurance or real estate agency, health services, travel agency, and other uses under CG zoning. Site has ample parking and great accessibility to US-1.



NO WARRANTY OR REPRESENTATION, EXPRESS OR IMPLIED, IS MADE AS TO THE ACCURACY OF THE INFORMATION CONTAINED HEREIN, AND THE SAME IS SUBMITTED SUBJECT TO ERRORS, OMISSIONS, CHANGE OF PRICE, RENTAL OR OTHER CONDITIONS, PRIOR SALE, LEASE OR FINANCING, OR WITHDRAWAL WITHOUT NOTICE, AND OF ANY SPECIAL LISTING CONDITIONS IMPOSED BY OUR PRINCIPALS NO WARRANTIES OR REPRESENTATIONS ARE MADE AS TO THE CONDITION OF THE PROPERTY OR ANY HAZARDS CONTAINED THEREIN ARE ANY TO BE IMPLIED.

Jeremiah Baron
& CO.

Commercial Real Estate, LLC

Listing Contact:

Alex Rodriguez-Torres | 772-353-0638 | Rteincorporated@aol.com

Office: 49 SW Flagler Ave. Suite 301 Stuart FL, 34994 | 772-286-5744

2017 Demographics

Total Population		Average Household Income		Average Age	
1 Mile	4,810	1 Mile	\$44,909	1 Mile	58.40
3 Mile	55,515	3 Mile	\$51,003	3 Mile	43.90
5 Mile	126,945	5 Mile	\$58,737	5 Mile	43.60

Jeremiah Baron
& CO.

Commercial Real Estate, LLC

Listing Contact:

Alex Rodriguez-Torres | 772-353-0638 | Rteincorporated@aol.com

Office: 49 SW Flagler Ave. Suite 301 Stuart FL, 34994 | 772-286-5744

Zoning Information

Professional Office Condo

8493 S US Highway 1, Port St. Lucie FL 34952

CG - Commercial General

Purpose. The purpose of this district is to provide and protect an environment suitable for a wide variety of commercial uses intended to serve a population over a large market area, which do not impose undesirable noise, vibration, odor, dust, or offensive effects on the surrounding area, together with such other uses as may be necessary to and compatible with general commercial surroundings. The number in "()" following each identified use corresponds to the SIC Code reference described in Section 3.01.02(B). The number 999 applies to a use not defined under the SIC Code but may be further defined in Section 2.00.00 of this Code.

2. Permitted Uses:

- a. Adjustment/collection and credit reporting services. (732)
- b. Advertising. (731)
- c. Amphitheatres. (999)
- d. Amusements and recreation services - except stadiums, arenas, race tracks, amusement parks. (79)
- e. Apparel and accessory stores. (56)
- f. Automobile dealers. (55)
- g. Automotive rental, repairs and serv. (except body repairs). (751, 753, 754)
- h. Beauty and barber services. (723/724)
- i. Building materials, hardware and garden supply. (52)
- j. Cleaning services. (7349)
- k. Commercial printing. (999)
- l. Communications - except towers. (48)
- m. Computer programming, data processing and other computer serv. (737)

- n. Contract construction serv. (office and interior storage only). (15/16/17)
- o. Cultural activities and nature exhibitions. (999)
- p. Duplicating, mailing, commercial art/photo. and stenog. serv. (733)
- q. Eating places. (581)
- r. Educational services - except public schools. (82)
- s. Engineering, accounting, research, management and related services. (87)
- t. Equipment rental and leasing services. (735)
- u. Executive, legislative, and judicial functions. (91/92/93/94/95/96/97)
- v. Farm labor and management services. (076)
- w. Financial, insurance, and real estate. (60/61/62/63/64/65/67)
- x. Food stores. (54)
- y. Funeral and crematory services. (726)
- z. Gasoline service stations. (5541)

[Other uses available in Municode.com](http://Municode.com)

Jeremiah Baron
& CO.

Commercial Real Estate, LLC

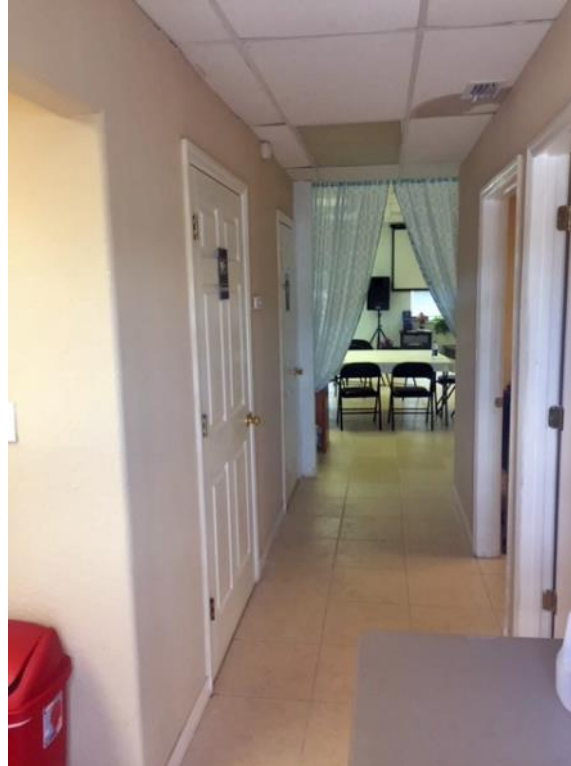
Listing Contact:

Alex Rodriguez-Torres | 772-353-0638 | Rteincorporated@aol.com

Office: 49 SW Flagler Ave. Suite 301 Stuart FL, 34994 | 772-286-5744

Interior Photos

Professional Office Condo
8493 S US Highway 1, Port St. Lucie FL 34952



Jeremiah Baron
& CO.

Commercial Real Estate, LLC

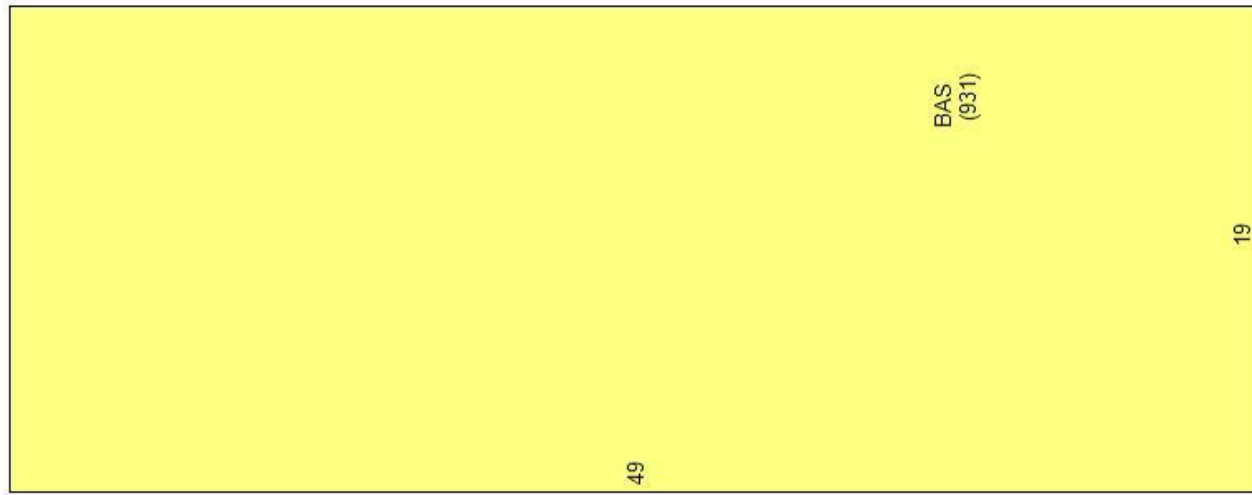
Listing Contact:

Alex Rodriguez-Torres | 772-353-0638 | Rteincorporated@aol.com

Office: 49 SW Flagler Ave. Suite 301 Stuart FL, 34994 | 772-286-5744

Floor Plan

Professional Office Condo
8493 S US Highway 1, Port St. Lucie FL 34952



Jeremiah Baron
& CO.

Commercial Real Estate, LLC

Listing Contact:

Alex Rodriguez-Torres | 772-353-0638 | Rteincorporated@aol.com

Office: 49 SW Flagler Ave. Suite 301 Stuart FL, 34994 | 772-286-5744

Property Aerial

Professional Office Condo

8493 S US Highway 1, Port St. Lucie FL 34952



Jeremiah Baron
& CO.

Commercial Real Estate, LLC

Listing Contact:

Alex Rodriguez-Torres | 772-353-0638 | Rteincorporated@aol.com

Office: 49 SW Flagler Ave. Suite 301 Stuart FL, 34994 | 772-286-5744