

FOR SALE

\$599,000

Auto Service Station

1435 W New Haven Ave. West Melbourne FL, 32904



Jeremiah Baron
& CO.

Commercial Real Estate, LLC

Listing Contact:

Jeremiah Baron | 772-528-0506 | Jbaron@commercialrealestatellc.com

Office: 49 SW Flagler Ave. Suite 301 Stuart FL, 34994 | 772-286-5744

Property Details

Auto Service Station

1435 W New Haven Ave. West Melbourne FL, 32904

PRICE	\$599,000
BUILDING SIZE	3,518 SF
BUILDING TYPE	Auto Service
ACREAGE	0.42 AC
FRONTAGE	+/- 91.2'
TRAFFIC COUNT	37,000 AADT
YEAR BUILT	1986
CONSTRUCTION TYPE	Masonry
PARKING SPACE	+/- 10
ZONING	I-B Integrated Business
LAND USE	Auto Repair
UTILITIES	Undisclosed

NO WARRANTY OR REPRESENTATION, EXPRESS OR IMPLIED, IS MADE AS TO THE ACCURACY OF THE INFORMATION CONTAINED HEREIN, AND THE SAME IS SUBMITTED SUBJECT TO ERRORS, OMISSIONS, CHANGE OF PRICE, RENTAL OR OTHER CONDITIONS, PRIOR SALE, LEASE OR FINANCING, OR WITHDRAWAL WITHOUT NOTICE, AND OF ANY SPECIAL LISTING CONDITIONS IMPOSED BY OUR PRINCIPALS NO WARRANTIES OR REPRESENTATIONS ARE MADE AS TO THE CONDITION OF THE PROPERTY OR ANY HAZARDS CONTAINED THEREIN ARE ANY TO BE IMPLIED.

Excellent vacant automotive building with great exposure and 3 automotive bays. Can be a possible redevelopment opportunity! There's also a vacant Checkers property next door that can be offered as a packaged deal! A total of 1.13 acres.

Site is located in the high traffic area of US 192 surrounded by major retailers, restaurants and the Melbourne Square Mall. Access roads from the west include the Beachline Expressway and I-95.



Jeremiah Baron
& CO.

Commercial Real Estate, LLC

Listing Contact:

Jeremiah Baron | 772-528-0506 | Jbaron@commercialrealestatellc.com

Office: 49 SW Flagler Ave. Suite 301 Stuart FL, 34994 | 772-286-5744

Demographics

2018 Population Estimate		Average Household Income		Average Age	
1 Mile	7,934	1 Mile	\$63,969	1 Mile	46.10
3 Mile	55,404	3 Mile	\$57,500	3 Mile	44.00
5 Mile	135,341	5 Mile	\$62,876	5 Mile	43.70

2023 Population Projection		Median Household Income		Median Age	
1 Mile	8,574	1 Mile	\$45,207	1 Mile	48.10
3 Mile	59,863	3 Mile	\$42,014	3 Mile	44.90
5 Mile	145,719	5 Mile	\$45,133	5 Mile	45.40

Jeremiah Baron
& CO.

Commercial Real Estate, LLC

Listing Contact:

Jeremiah Baron | 772-528-0506 | Jbaron@commercialrealestatellc.com

Office: 49 SW Flagler Ave. Suite 301 Stuart FL, 34994 | 772-286-5744

Zoning Information

Auto Service Station

1435 W New Haven Ave. West Melbourne FL, 32904

CIB - Integrated Business

Sec. 98-820. - Principal uses and structures.

The principal uses and structures in the IB district can be present on one site or on separate distinct sites. The following are the four allowed land use groups:

(1) Commercial.

- a. Retail stores, sales and display rooms, and wholesaling establishments.
- b. Personal service establishments such as barber shops and beauty shops, laundry, dry cleaning and similar uses.
- c. Service and repair establishments such as household appliances, radio and television and similar uses.
- d. Automobile repair including body and upholstery or painting.
- e. Automotive sales and rental.
- f. Hotels, motels.
- g. Offices.
- h. Medical and dental clinics.
- i. Studios.
- j. Restaurants (without drive-through).
- k. Financial institutions without drive-through lanes.
- l. Vocational and trade schools.
- m. Veterinary hospitals and clinics.

- n. Indoor recreation and training centers.
- o. Communication facilities mounted to existing buildings and structures.
- p. Plant nurseries and greenhouses.
- q. Public and private parking lots and garages.
- r. Day cares located on an arterial road.
- s. Clubs, lodges and fraternal organizations located on an arterial road.



Jeremiah Baron
& CO.

Commercial Real Estate, LLC

Listing Contact:

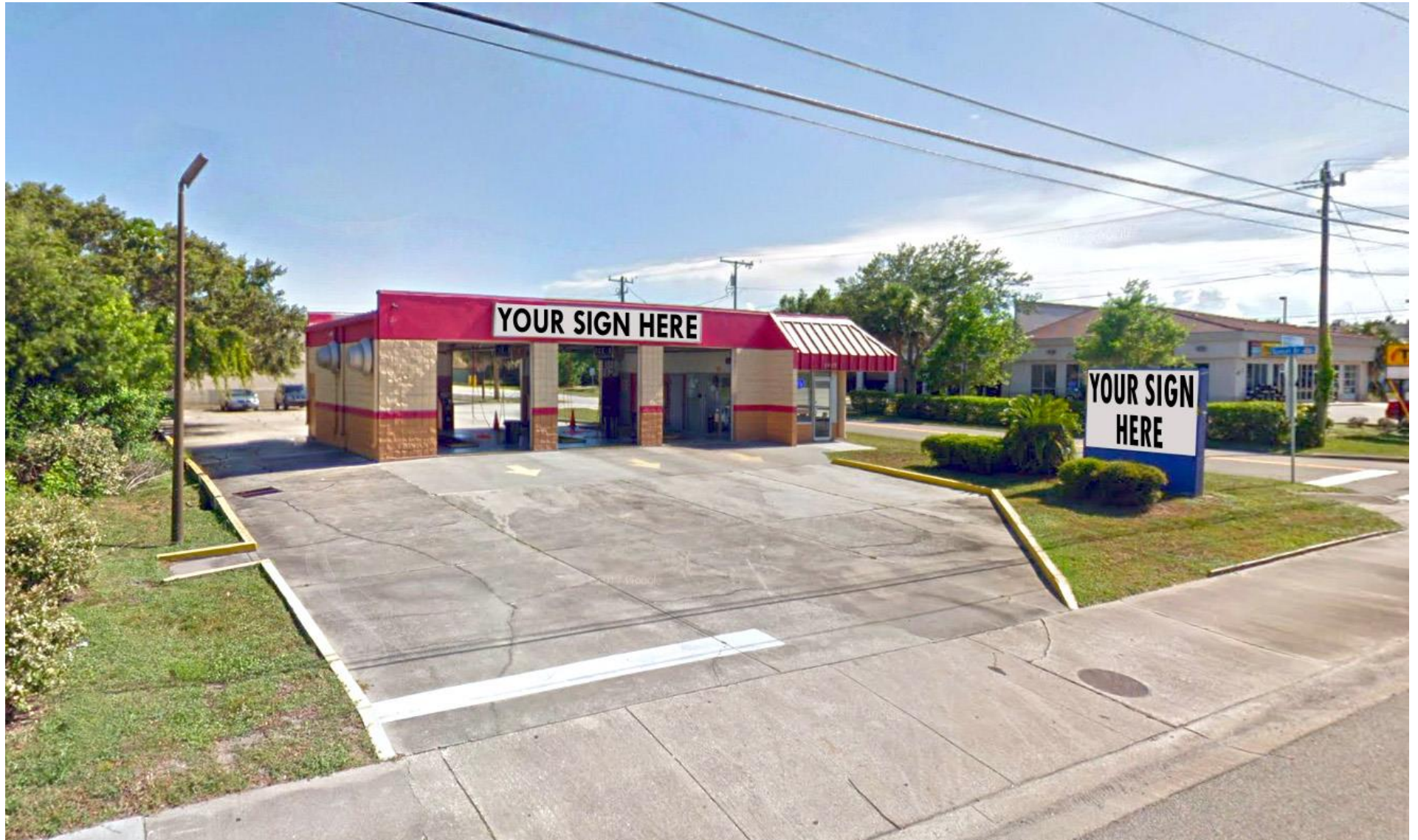
Jeremiah Baron | 772-528-0506 | Jbaron@commercialrealestatellc.com

Office: 49 SW Flagler Ave. Suite 301 Stuart FL, 34994 | 772-286-5744

Exterior View

Auto Service Station

1435 W New Haven Ave. West Melbourne FL, 32904



Jeremiah Baron
& CO.

Commercial Real Estate, LLC

Listing Contact:

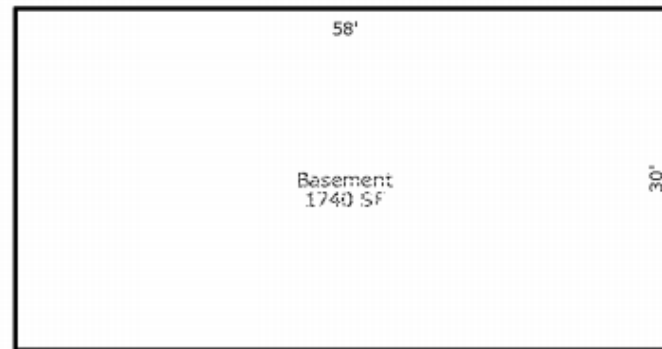
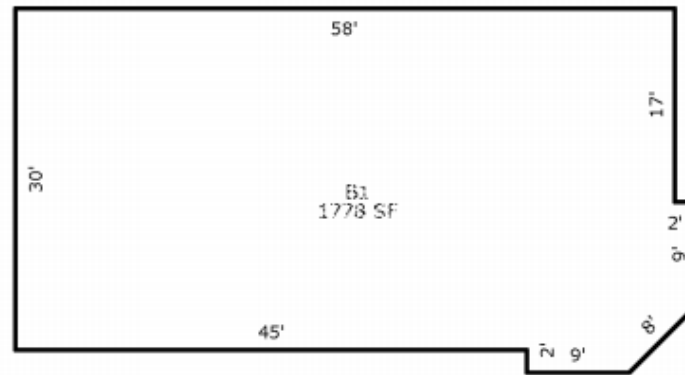
Jeremiah Baron | 772-528-0506 | Jbaron@commercialrealestatellc.com

Office: 49 SW Flagler Ave. Suite 301 Stuart FL, 34994 | 772-286-5744

Floor Plan

Auto Service Station

1435 W New Haven Ave. West Melbourne FL, 32904



Jeremiah Baron
& CO.

Commercial Real Estate, LLC

Listing Contact:

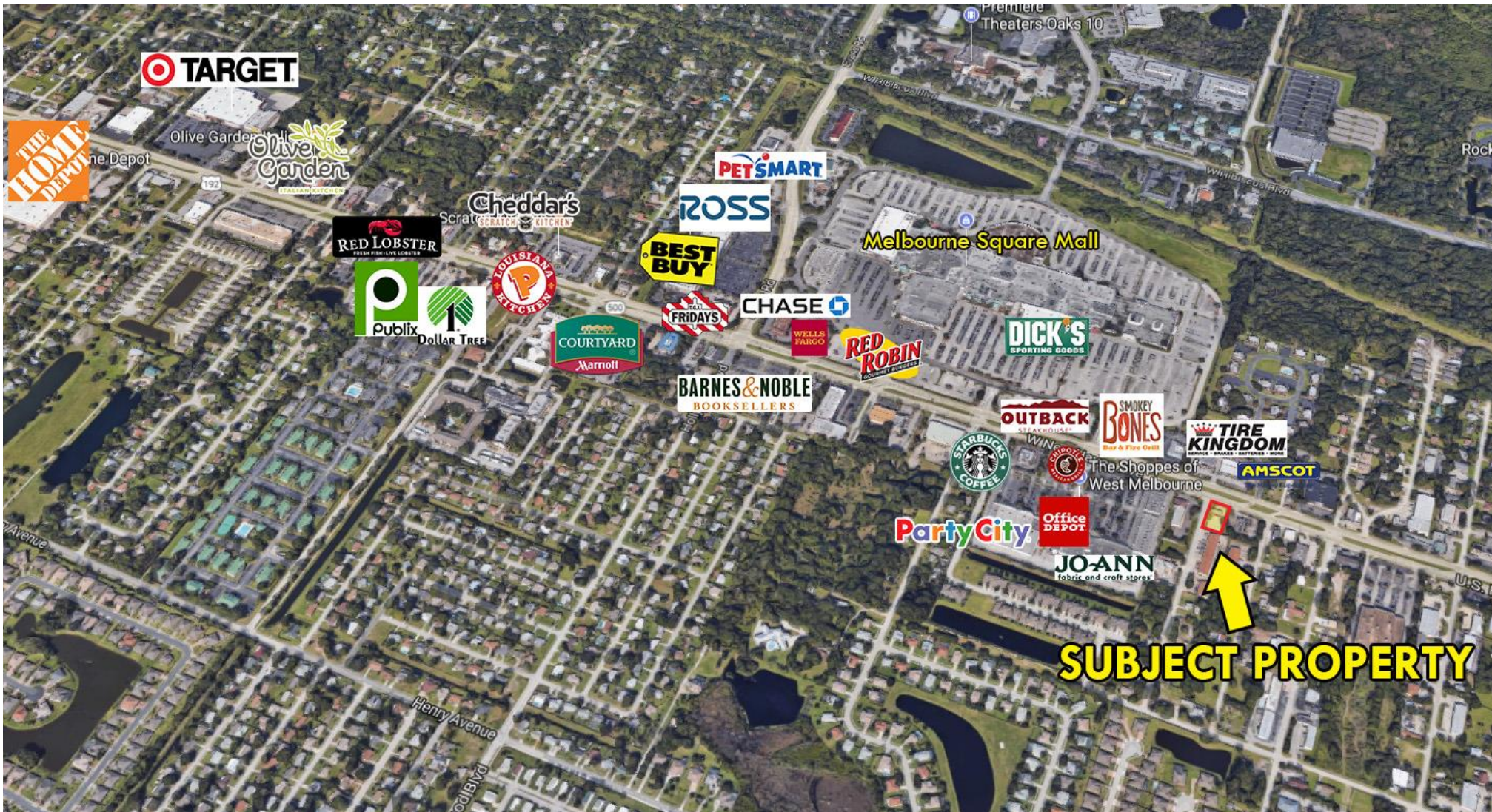
Jeremiah Baron | 772-528-0506 | Jbaron@commercialrealestatellc.com

Office: 49 SW Flagler Ave. Suite 301 Stuart FL, 34994 | 772-286-5744

Property Aerial

Auto Service Station

1435 W New Haven Ave. West Melbourne FL, 32904



Jeremiah Baron
& CO.

Commercial Real Estate, LLC

Listing Contact:

Jeremiah Baron | 772-528-0506 | Jbaron@commercialrealestatellc.com

Office: 49 SW Flagler Ave. Suite 301 Stuart FL, 34994 | 772-286-5744