

# FREESTANDING WAREHOUSE & DWELLING

2807 Okeechobee Road, Fort Pierce FL 34947



Asking Price: \$499,000

**Jeremiah Baron**  
& CO.

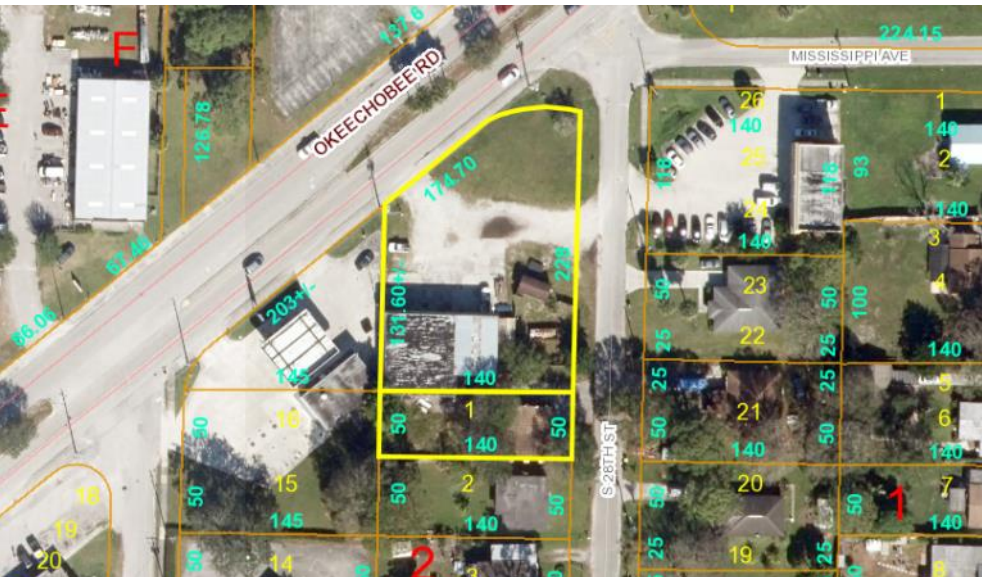
Commercial Real Estate, LLC

49 SW Flagler Ave. Suite 301  
Stuart FL, 34994  
[www.commercialrealestatellc.com](http://www.commercialrealestatellc.com)

**Josh Johnson**  
772.286.5744 Office  
772.631.5805 Mobile  
[jjohnson@commercialrealestatellc.com](mailto:jjohnson@commercialrealestatellc.com)

# PROPERTY OVERVIEW

- Exceptional warehouse property located on the corner of Okeechobee Road and S 28th Street in Fort Pierce, FL.
- Site features a total of four 10' x 14' bay doors, office area, and additional open space in the front.
- Included with the deal is a 840 SF residential home on a 0.16 AC of land adjacent to the main building.
- Property is adjacent to a Valero gas station, and it's in close proximity to S 25th Street and less than 3 miles away from the I-95 access ramp.



PRICE	\$499,000
BUILDING SIZE	4,100 SF + 840 SF House
BUILDING TYPE	Warehouse / Residential
ACREAGE	0.71 AC
FRONTAGE	174.70'
TRAFFIC COUNT	17,600 ADT
YEAR BUILT	1967 (warehouse) / 1958 (home)
CONSTRUCTION TYPE	CBS
PARKING SPACE	25
ZONING	C-3
LAND USE	GC
PARCEL ID	2417-510-0044-000-2
	2417-510-0028-000-4

NO WARRANTY OR REPRESENTATION, EXPRESS OR IMPLIED, IS MADE AS TO THE ACCURACY OF THE INFORMATION CONTAINED HEREIN, AND THE SAME IS SUBMITTED SUBJECT TO ERRORS, OMISSIONS, CHANGE OF PRICE, RENTAL OR OTHER CONDITIONS, PRIOR SALE, LEASE OR FINANCING, OR WITHDRAWAL WITHOUT NOTICE, AND OF ANY SPECIAL LISTING CONDITIONS IMPOSED BY OUR PRINCIPALS NO WARRANTIES OR REPRESENTATIONS ARE MADE AS TO THE CONDITION OF THE PROPERTY OR ANY HAZARDS CONTAINED THEREIN ARE ANY TO BE IMPLIED.

**Jeremiah Baron  
& CO.**

**Commercial Real Estate, LLC**

49 SW Flagler Ave. Suite 301  
Stuart FL, 34994  
[www.commercialrealestatellc.com](http://www.commercialrealestatellc.com)

**Josh Johnson**  
772.286.5744 Office  
772.631.5805 Mobile  
[jjohnson@commercialrealestatellc.com](mailto:jjohnson@commercialrealestatellc.com)



# SITE PHOTOS - WAREHOUSE



**Jeremiah Baron**  
& CO.

Commercial Real Estate, LLC

49 SW Flagler Ave. Suite 301  
Stuart FL, 34994  
[www.commercialrealestatellc.com](http://www.commercialrealestatellc.com)

**Josh Johnson**  
772.286.5744 Office  
772.631.5805 Mobile  
[jjohnson@commercialrealestatellc.com](mailto:jjohnson@commercialrealestatellc.com)



# SITE PHOTOS - DWELLING



**Jeremiah Baron  
& CO.**

**Commercial Real Estate, LLC**

49 SW Flagler Ave. Suite 301  
Stuart FL, 34994  
[www.commercialrealestatellc.com](http://www.commercialrealestatellc.com)

**Josh Johnson**  
772.286.5744 Office  
772.631.5805 Mobile  
[jjohnson@commercialrealestatellc.com](mailto:jjohnson@commercialrealestatellc.com)

# DEMOGRAPHICS

2020 Population Estimate		2020 Average Household Income		Average Age	
1 Mile	9,075	1 Mile	\$	1 Mile	36.30
3 Mile	47,123	3 Mile	\$	3 Mile	36.80
5 Mile	71,725	5 Mile	\$	5 Mile	40.70
2025 Population Projection		2020 Median Household Income		Median Age	
1 Mile	9,892	1 Mile	\$	1 Mile	34.60
3 Mile	51,312	3 Mile	\$	3 Mile	35.20
5 Mile	78,634	5 Mile	\$	5 Mile	40.30

**Jeremiah Baron**  
& CO.

Commercial Real Estate, LLC

49 SW Flagler Ave. Suite 301  
Stuart FL, 34994  
[www.commercialrealestatellc.com](http://www.commercialrealestatellc.com)

**Josh Johnson**  
772.286.5744 Office  
772.631.5805 Mobile  
[jjohnson@commercialrealestatellc.com](mailto:jjohnson@commercialrealestatellc.com)

# ZONING INFORMATION

## **Sec. 22-31. - General Commercial Zone (C-3).**

(a) Purpose. The district is intended to provide for a broad variety of business activities including shoppers' goods stores, convenience goods and service establishments, offices and tourist/entertainment facilities. Many public and semi-public uses are also appropriate. Compared to the C-4 zone, this district is more suitable for uses requiring a high degree of accessibility to vehicular traffic, low intensity uses on large tracts of land, most repair services and small warehousing and wholesaling operations. Although this zone should be located along or near arterial or collector streets, it is not the intent of this district to encourage the extension of strip commercial areas. Instead it should promote concentrations of commercial activities.

(b) Basic use standards. Uses in a C-3 zone must meet the requirements of this section. More restrictive requirements, set forth in accordance with other provisions of this chapter, must be satisfied by some conditional uses.

(1) Lot size.

- a. The minimum lot area shall be ten thousand (10,000) square feet.
- b. The minimum lot width shall be seventy (70) feet.
- c. The minimum lot depth shall be ninety (90) feet.

(2) Yards.

- a. The minimum depth of the front yard will be twenty-five (25) feet.
- b. The minimum yard depth (if not the front yard) for portions of the property abutting a public right-of-way or residential district shall be fifteen (15) feet.

(3) Lot coverage. Buildings shall not cover more than sixty (60) per cent of the lot area.

(4) Building height. No building shall exceed a height of sixty-five (65) feet above grade, except that multifamily developments in accordance with the requirements of the R-5 zone may be approved.

(c) Other applicable use standards.

(1) Site plan review shall be required for uses which have buildings with more than four thousand (4,000) square feet of floor area.

(2) Accessory buildings shall comply with all yard, lot coverage and building height requirements of

this chapter.

(3) Every lot shall abut a street other than an alley for at least fifty (50) feet.

(4) Materials or objects which would detract from the open space character of an uncovered or unenclosed area will not be permitted in such an area.

(5) All uses will comply with applicable access, parking and loading standards in sections 22-60 and 22-61.

(6) Conditional uses will meet the requirements in sections 22-74 through 22-86.

(7) Signs will comply with standards referred to in section 22-55.

(8) All other applicable ordinance requirements will also be satisfied.

(9) An adult establishment is not permitted in C-3 unless the adult establishment is at least:

- a. One thousand (1,000) feet from any other adult establishment;
- b. Four hundred (400) feet from any established church, public or private school, public playground or public park;
- c. Four hundred (400) feet from any areas zoned E-1, R-1, R-2, R-3, R-4, or R-5.

(10) For purposes of the distance limitations contained in subsection (e)(9) above, the measurement shall be made by extending a straight line from the main entrance of the building of the adult establishment to the:

- a. Front door of the main building occupied by any other adult establishment or any established church; or
- b. To the nearest property line of any residential district, playground, school or park.

**Jeremiah Baron  
& CO.**

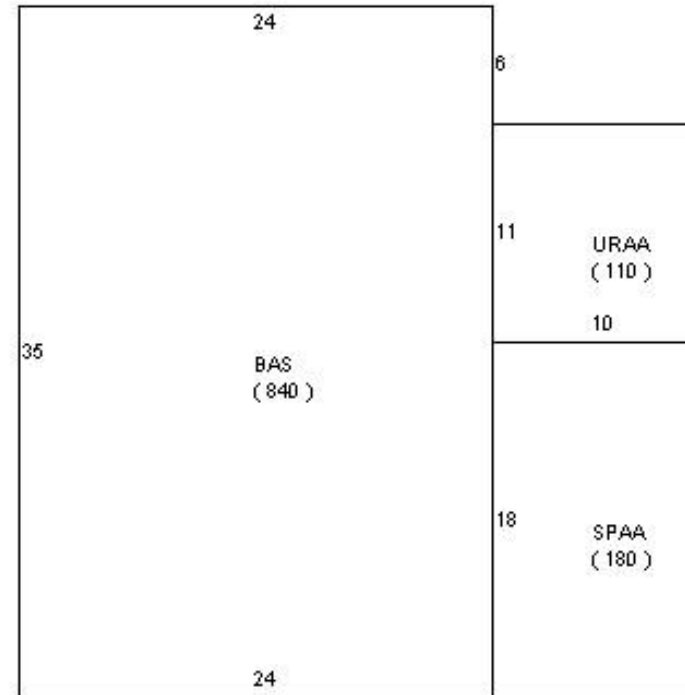
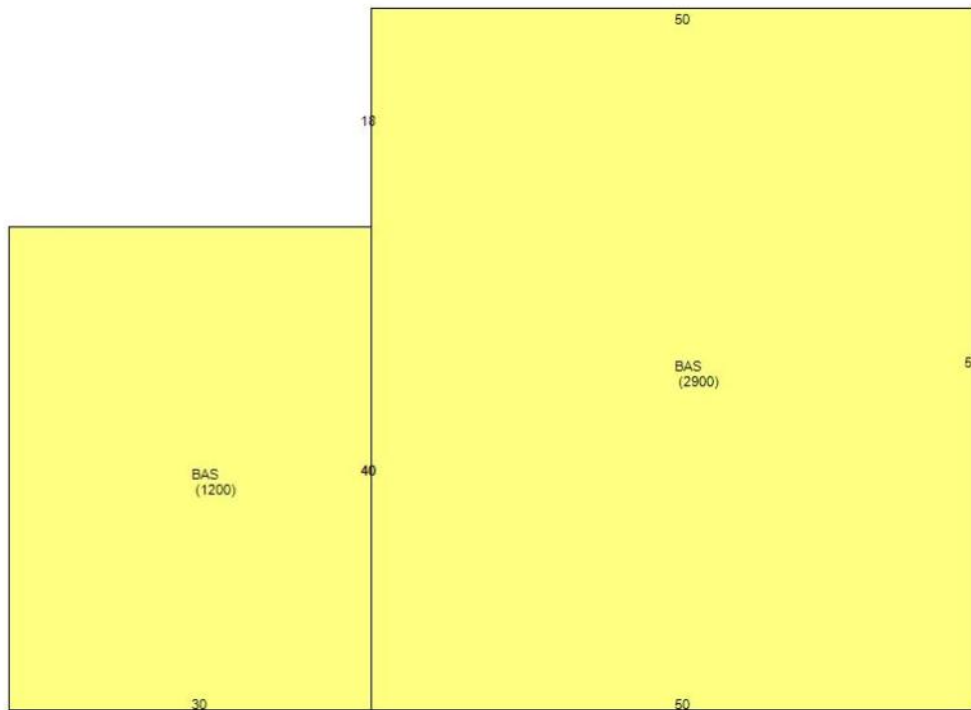
**Commercial Real Estate, LLC**

49 SW Flagler Ave. Suite 301  
Stuart FL, 34994  
[www.commercialrealestatellc.com](http://www.commercialrealestatellc.com)

**Josh Johnson**  
772.286.5744 Office  
772.631.5805 Mobile  
[jjohnson@commercialrealestatellc.com](mailto:jjohnson@commercialrealestatellc.com)



# SITE PLAN



**Jeremiah Baron  
& CO.**  
Commercial Real Estate, LLC

49 SW Flagler Ave. Suite 301  
Stuart FL, 34994  
[www.commercialrealestatellc.com](http://www.commercialrealestatellc.com)

**Josh Johnson**  
772.286.5744 Office  
772.631.5805 Mobile  
[jjohnson@commercialrealestatellc.com](mailto:jjohnson@commercialrealestatellc.com)



# TRADE AREA MAP



**Jeremiah Baron**  
**& CO.**

## Commercial Real Estate, LLC

49 SW Flagler Ave. Suite 301  
Stuart FL, 34994  
[www.commercialrealestatellc.com](http://www.commercialrealestatellc.com)

**Josh Johnson**  
772.286.5744 Office  
772.631.5805 Mobile  
jjohnson@commercialrealestatellc.com