

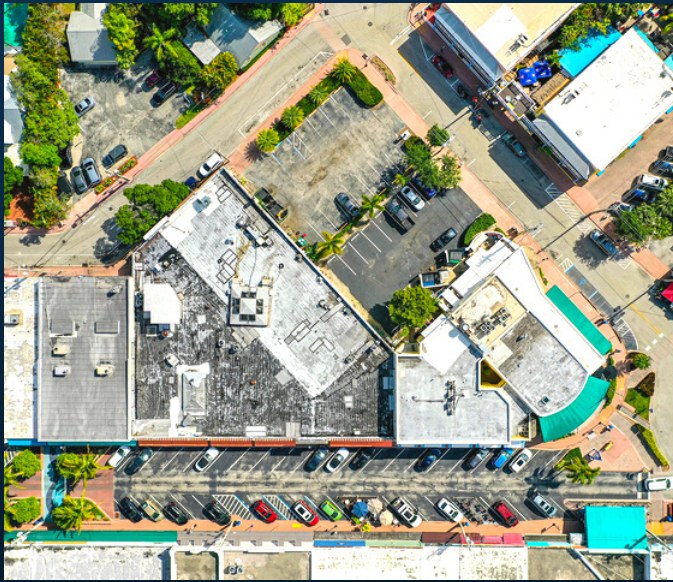
FOR LEASE



DOWNTOWN STUART PRIVATE PARKING

256 S Colorado Ave, Stuart FL 34994

CALL FOR PRICE | 772.418.4506



12 SPACES | FRONTAGE 70'

Rare Opportunity to lease 12 parking spaces in Historic Downtown Stuart. The property is set at the corner of Colorado Ave & Seminole St.

The lot is parametered by sidewalks on the northern & eastern sides. Additional lot features include a handicap parking space, light post on the street conner and close proximity to trendy shoppes and restaurants.

This area is home to the only foot traffic in Martin County and would work great for valet services.

Jeremiah Baron
& CO.

Commercial Real Estate, LLC

Present By: CHRIS BELLAND

CBelland@commercialrealestatellc.com

O: 772.286.5744 | C: 772.418.4506

TreasureCoastCommercialRealestate.com