

EXECUTIVE SUITE

475 NW Prima Vista Blvd Port St. Lucie, FL



FOR LEASE | \$675 PER MONTH

**Jeremiah Baron
& CO.**

Commercial Real Estate, LLC

49 SW Flagler Ave. Suite 301

Stuart FL, 34994

www.commercialrealestatellc.com

Matthew Mondo

772.286.5744 Office

772.236.7780 Mobile

mmondo@commercialrealestatellc.com

PROPERTY OVERVIEW

Great opportunity to lease a private executive suite located in Port St. Lucie's Prima Vista Commons Plaza. The property hosts paver accents at the entry, exterior lighting, and well-manicured landscaping.

Situated between I95 & US1 and only 2 miles from the turnpike, the office suite offers excellent logistical advantages. This 220sf executive unit is perfect for any businessperson especially a medical professional.

Rental Rates include 24/7 access, electric and internet access. Features include a shared waiting room and washroom with a main office space.



LEASE PRICE	\$675 PER MONTH
UNIT SIZE	1,260 SF
FRONTAGE	430'
TRAFFIC COUNT	26,500 ADT
YEAR BUILT	2006
CONSTRUCTION TYPE	CB Stucco
PARKING SPACE	Ample
ZONING	Limited Mi (LMD)
LAND USE	ROI
PARCEL ID	3429-600-0021-000-1

NO WARRANTY OR REPRESENTATION, EXPRESS OR IMPLIED, IS MADE AS TO THE ACCURACY OF THE INFORMATION CONTAINED HEREIN, AND THE SAME IS SUBMITTED SUBJECT TO ERRORS, OMISSIONS, CHANGE OF PRICE, RENTAL OR OTHER CONDITIONS, PRIOR SALE, LEASE OR FINANCING, OR WITHDRAWAL WITHOUT NOTICE, AND OF ANY SPECIAL LISTING CONDITIONS IMPOSED BY OUR PRINCIPALS NO WARRANTIES OR REPRESENTATIONS ARE MADE AS TO THE CONDITION OF THE PROPERTY OR ANY HAZARDS CONTAINED THEREIN ARE ANY TO BE IMPLIED.

Jeremiah Baron
& CO.

Commercial Real Estate, LLC

49 SW Flagler Ave. Suite 301

Stuart FL, 34994

www.commercialrealestatellc.com

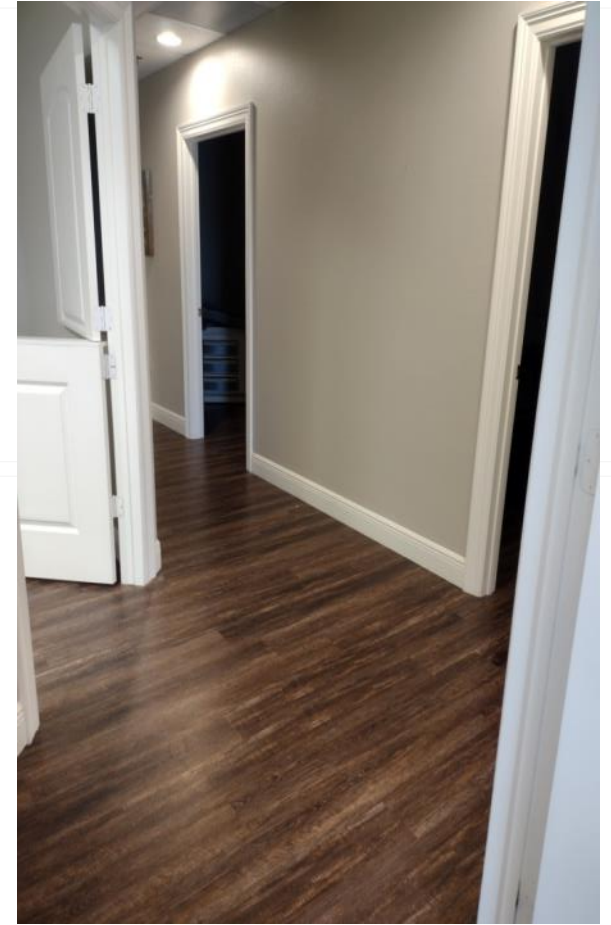
Matthew Mondo

772.286.5744 Office

772.236.7780 Mobile

mmondo@commercialrealestatellc.com

SITE PHOTOS



Jeremiah Baron
& CO.

Commercial Real Estate, LLC

49 SW Flagler Ave. Suite 301
Stuart FL, 34994
www.commercialrealestatellc.com

Matthew Mondo
772.286.5744 Office
772.236.7780 Mobile
mmondo@commercialrealestatellc.com

DEMOGRAPHICS

2022 Population Estimate		2022 Average Household Income		Average Age	
1 Mile	38,359	2 Mile	\$71,866	1 Mile	37
3 Mile	136,880	5 Mile	\$72,697	3 Mile	39.70
5 Mile	266,731	10 Mile	\$76,177	5 Mile	40.40

2027 Population Projection		2022 Median Household Income		Median Age	
1 Mile	44,186	2 Mile	\$57,925	1 Mile	37
3 Mile	190,702	5 Mile	\$60,363	3 Mile	40
5 Mile	385,371	10 Mile	\$61,513	5 Mile	40

**Jeremiah Baron
& CO.**

Commercial Real Estate, LLC

49 SW Flagler Ave. Suite 301
Stuart FL, 34994
www.commercialrealestatellc.com

Matthew Mondo
772.286.5744 Office
772.236.7780 Mobile
mmondo@commercialrealestatellc.com

ZONING INFORMATION

Sec. 158.155. Limited Mixed Use Zoning District (LMD).

- (A) **Purpose.** It is the intent and purpose of the Limited Mixed Use Zoning District (LMD) to allow, upon specific application, the conversion of single-family residential lots of record to multi-family, enclosed assembly areas, professional/business office or limited retail uses in a planned manner consistent with the Comprehensive Plan. This district sets specific requirements for land assembly, off-street parking, drainage setbacks, access and buffering to ensure a planned development which provides for the efficient and economical use of land, appropriate or harmonious variety in physical development, a high compatibility with adjacent existing and future development and which provides for safe and efficient access to major transportation facilities.
- (B) **Limited Mixed Use District Defined.** For the purpose of this chapter, a limited mixed use district (LMD) is defined as land planned under unified control and developed in a coordinated manner in one or more development phases according to an approved conceptual plan, and with programs for full maintenance and operations for facilities and improvements such as parking and driveways, drainage, buffers and landscaping.
- (C) **Permitted Principal Uses and Structures.** The following principal uses and structures are permitted:
- (1) Any permitted use listed in the professional zoning district (P).
 - (2) Any permitted use listed in the multiple-family residential zoning district (RM-11).
 - (3) Retail or personal service uses conducted wholly within an enclosed building, including the retail sales of beer and wine for off and incidental on premises consumption in accordance with Chapter 110, but not including convenience/gas sales. These uses shall not exceed fifty percent (50%) of the building's gross floor area and no one use shall exceed 5,000 square feet. The conceptual plan required under section 158.155(M)(1)(c) shall specify those areas of the building to be used for retail uses.
- (4) Restaurants 5,000 square feet or less (not including drive-through facilities) with or without an alcoholic beverage license for on premises consumption of alcoholic beverages in accordance with Chapter 110. The conceptual plan required under section 158.155(M)(1)(c) shall specify those areas of the building to be used for restaurants.
- (D) **Special Exception Use.**
- (1) Any special exception use listed in the professional zoning district (P).
 - (2) Any special exception use listed in the multiple-family residential zoning district (RM-11).
 - (3) Retail plant nursery.
- (E) **Accessory Uses.** As set forth in section 158.217.

**Jeremiah Baron
& CO.**

Commercial Real Estate, LLC

49 SW Flagler Ave. Suite 301

Stuart FL, 34994

www.commercialrealestatellc.com

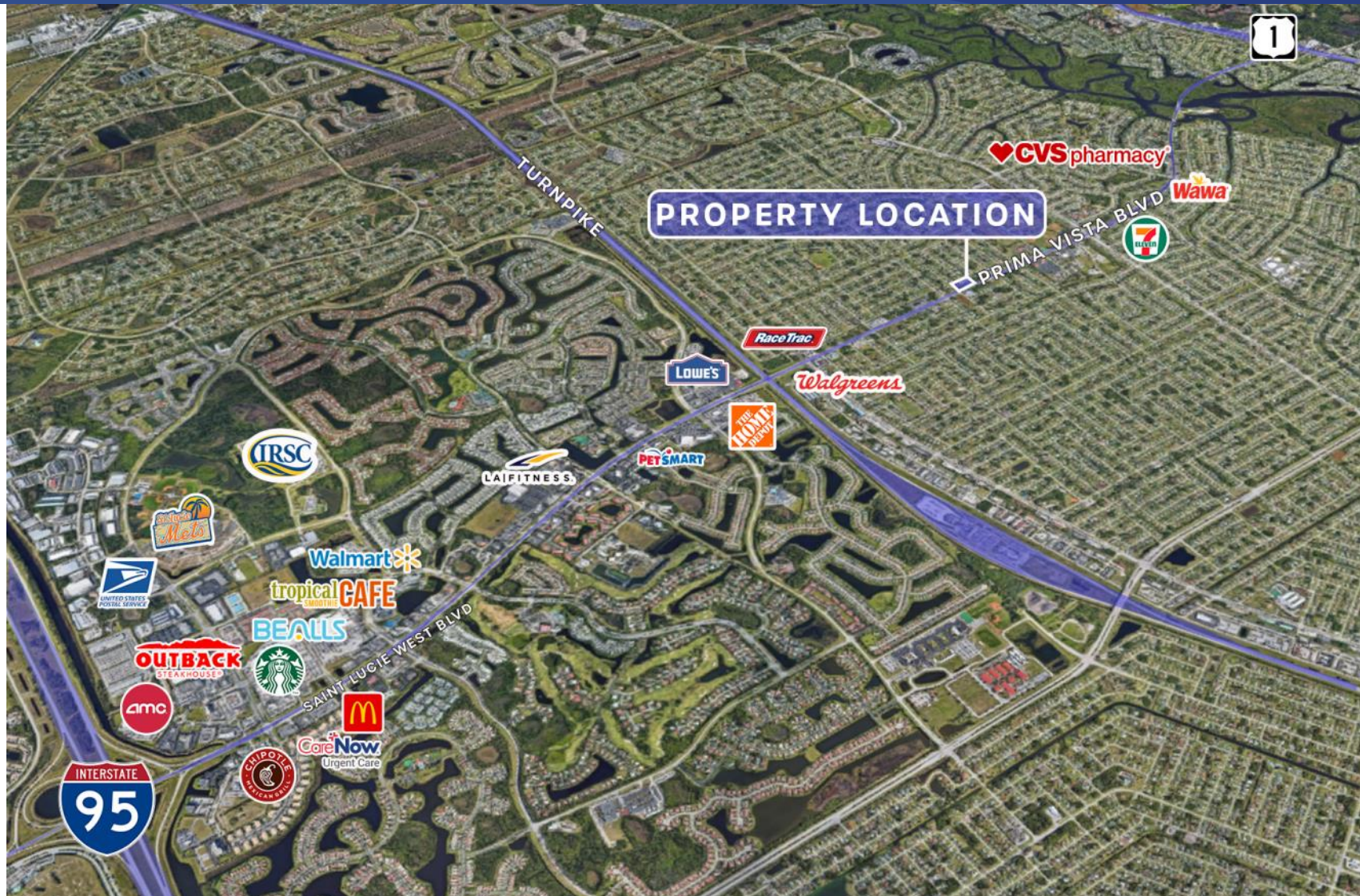
Matthew Mondo

772.286.5744 Office

772.236.7780 Mobile

mmondo@commercialrealestatellc.com

TRADE AREA MAP



Jeremiah Baron
& CO.

Commercial Real Estate, LLC

49 SW Flagler Ave. Suite 301
Stuart FL, 34994
www.commercialrealestatellc.com

Matthew Mondo
772.286.5744 Office
772.236.7780 Mobile
mmondo@commercialrealestatellc.com