

RETAIL SPACES AT MARKET PLACE PLAZA

10230–10368 US Highway 1, Port St. Lucie FL 34952



JOIN: **CRUNCH** FITNESS **DOLLAR TREE** **Aaron's** **CSL Plasma**

FOR LEASE | \$25.00/sf NNN

**JEREMIAH BARON
& CO**

COMMERCIAL REAL ESTATE

2100 SE Ocean Blvd. Suite 100
Stuart FL, 34996
www.commercialrealestatellc.com

Conor Mackin
772.286.5744 Office
973.303.1160 Mobile
cmackin@commercialrealestatellc.com

PROPERTY OVERVIEW

- Join a dynamic community of tenants at the Market Place Shopping Plaza. Our current occupants include well-established brands such as Aaron's, Dollar Tree, and the future location of a Crunch Fitness.
- Whether you're a boutique retailer, a local eatery, or a national brand, we have the perfect space for you. There's an expansive 3,450 square foot end cap space that was formerly occupied by a restaurant; ideal for comparable use.
- The plaza is undergoing a transformation, with \$1 million allocated for extensive renovations. These improvements will revamp the plaza's look and functionality, creating an attractive, modern, and welcoming environment for businesses and customers alike.

SPACE AVAILABLE:

10368 (END CAP)	Former Restaurant with hood system	3,450 SF
------------------------	------------------------------------	----------



LEASE RATE	\$25.00/SF NNN
BUILDING SIZE	114,595 SF
BUILDING TYPE	Commercial Shopping Center
ACREAGE	11.92 AC
FRONTAGE	644' (Jennings Road) +/- 700' (US-1)
TRAFFIC COUNT	41,000 ADT (US-1) 5,100 ADT (Jennings Road)
YEAR BUILT	1997
CONSTRUCTION TYPE	CB Stucco
PARKING SPACE	865
ZONING	General Commercial (PSL)
LAND USE	CG
PARCEL ID	4412-504-0005-000-9

NO WARRANTY OR REPRESENTATION, EXPRESS OR IMPLIED, IS MADE AS TO THE ACCURACY OF THE INFORMATION CONTAINED HEREIN, AND THE SAME IS SUBMITTED SUBJECT TO ERRORS, OMISSIONS, CHANGE OF PRICE, RENTAL OR OTHER CONDITIONS, PRIOR SALE, LEASE OR FINANCING, OR WITHDRAWAL WITHOUT NOTICE, AND OF ANY SPECIAL LISTING CONDITIONS IMPOSED BY OUR PRINCIPALS NO WARRANTIES OR REPRESENTATIONS ARE MADE AS TO THE CONDITION OF THE PROPERTY OR ANY HAZARDS CONTAINED THEREIN ARE ANY TO BE IMPLIED.

**JEREMIAH BARON
& CO**

COMMERCIAL REAL ESTATE

2100 SE Ocean Blvd. Suite 100
Stuart FL, 34996
www.commercialrealestatellc.com

Conor Mackin
772.286.5744 Office
973.303.1160 Mobile
cmackin@commercialrealestatellc.com

SITE PHOTOS



**JEREMIAH BARON
& CO**

COMMERCIAL REAL ESTATE

2100 SE Ocean Blvd. Suite 100
Stuart FL, 34996
www.commercialrealestatellc.com

Conor Mackin
772.286.5744 Office
973.303.1160 Mobile
cmackin@commercialrealestatellc.com

DEMOGRAPHICS

2023 Population Estimate		2023 Average Household Income		Average Age	
1 Mile	9,172	1 Mile	\$78,858	1 Mile	41.8
3 Mile	119,750	3 Mile	\$81,581	3 Mile	46.1
5 Mile	356,033	5 Mile	\$83,735	5 Mile	44.8

2028 Population Projection		2023 Median Household Income		Median Age	
1 Mile	9,635	1 Mile	\$63,051	1 Mile	42.3
3 Mile	125,542	3 Mile	\$64,503	3 Mile	48.9
5 Mile	374,268	5 Mile	\$66,851	5 Mile	46.9

**JEREMIAH BARON
& CO**

COMMERCIAL REAL ESTATE

2100 SE Ocean Blvd. Suite 100
Stuart FL, 34996
www.commercialrealestatellc.com

Conor Mackin
772.286.5744 Office
973.303.1160 Mobile
cmackin@commercialrealestatellc.com

ZONING INFORMATION

Sec. 158.124. - General Commercial Zoning District (CG).

(A) Purpose. The purpose of the general commercial zoning district (CG) shall be to locate and establish areas within the City which are deemed to be uniquely suited for the development and maintenance of general commercial facilities. Said areas to be primarily along established highways where a mixed pattern of commercial usage is substantially established; to designate those uses and services deemed appropriate and proper for location and development standards and provisions as are appropriate to ensure proper development and functioning of uses within the district. This district incorporates most of those uses formerly designated shopping center commercial (CSC) and resort commercial (CR).

(B) Permitted Principal Uses and Structures. The following principal uses and structures are permitted.

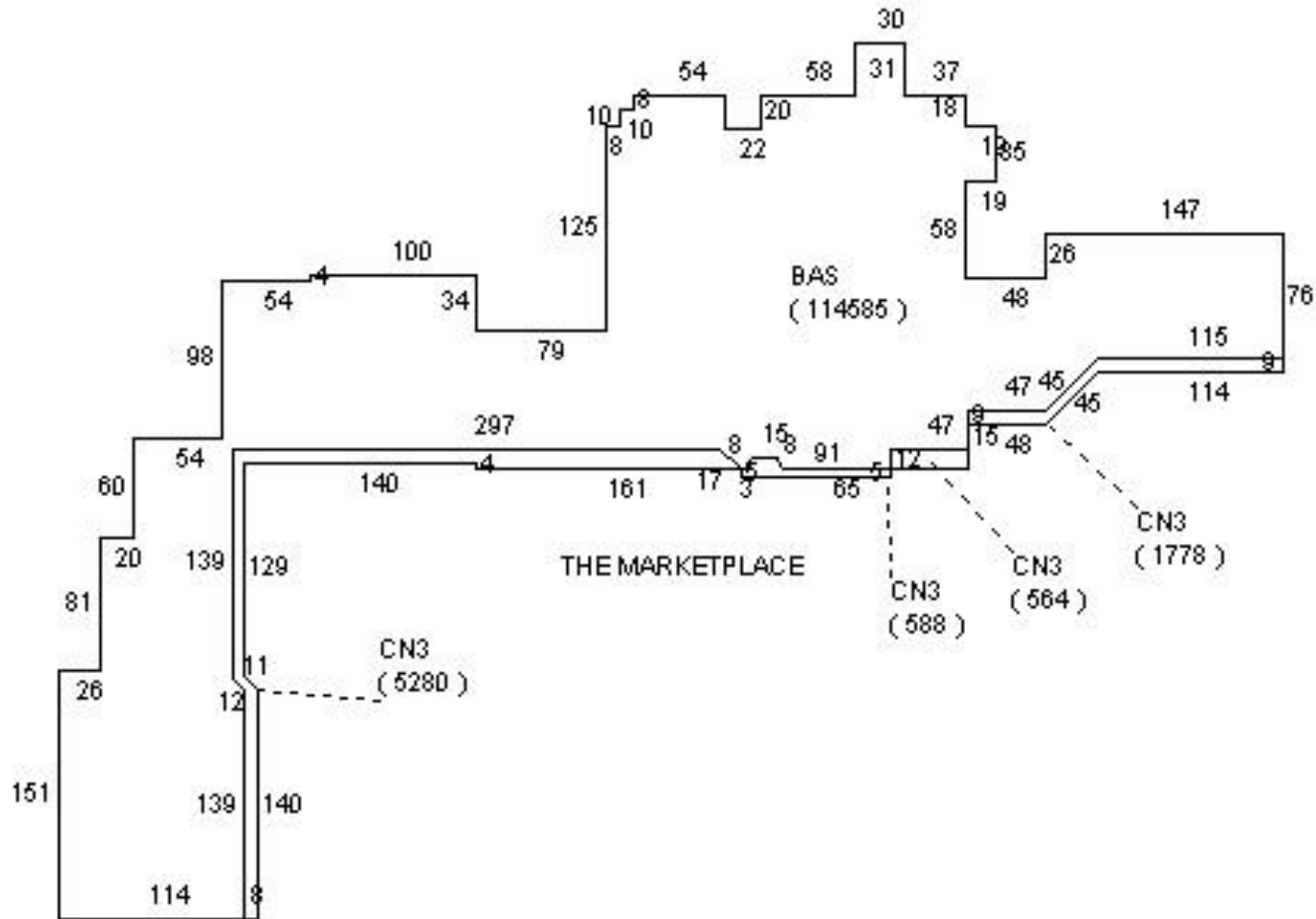
- (1) Any retail, business, or personal service use (including repair of personal articles, furniture, and household appliances) conducted wholly within an enclosed building, where repair, processing, or fabrication of products is clearly incidental to and restricted to on-premises sales.
- (2) Horticultural nursery, garden supply sales, or produce stand.
- (3) Office for administrative, business, or professional use.
- (4) Public facility or use.
- (5) Restaurants with or without an alcoholic beverage license for on premises consumption of alcoholic beverages in accordance with Chapter 110.
- (6) Retail sales of alcoholic beverages for incidental on and

off premises consumption in accordance with Chapter 110.

- (7) Park or playground or other public recreation.
 - (8) Motel, hotel, or motor lodge.
 - (9) Enclosed assembly area 3,000 square feet or less, with or without an alcoholic beverage license for on premises consumption of alcoholic beverages, in accordance with Chapter 110.
 - (10) Brewpub. provided no more than 10,000 kegs (5,000 barrels) of beer are made per year, in accordance with Chapter 110.
 - (11) One dwelling unit contained within the development which is incidental to and designed as an integral part of the principal structure.
 - (12) Kennel, enclosed.
 - (13) Medical Marijuana Dispensing Facilities as set forth in Chapter 120.
 - (14) Pharmacy.
- (C) Special Exception Uses. The following uses may be permitted only following the review and specific approval thereof by the City Council:
- (1) Enclosed assembly area over 3,000 square feet, with or without an alcoholic beverage license for on premises consumption of alcoholic beverages, in accordance with Chapter 110.
 - (2) Public utility facility, including water pumping plant, reservoir, and electrical substation, and sewage treatment plant.

- (3) Semi-public facility or use.
- (4) Car wash (full or self-service).
- (5) Kennel, enclosed with outdoor runs.
- (6) Bars, lounges, and night clubs.
- (7) Schools (public, private or parochial) or technical or vocational schools.
- (8) Automobile, truck, boat and/or farm equipment sales. No storage or display of vehicles shall be permitted outside an enclosed building unless an area for such use is designated on the approved site plan and does not reduce the required number of parking spaces for the building.
- (9) Automobile fuel sales.
- (10) Repair and maintenance of vehicles. No storage of vehicles shall be permitted outside of an enclosed building unless an area designated for such use is on the approved site plan and does not reduce the required number of parking spaces for the building.
- (11) Retail convenience stores with or without fuel service station.
- (12) Hospitals, free standing emergency department, nursing, or convalescent homes.
- (13) Any use set forth in Subsection B: "Permitted Principal Uses and Structures" that include drive-through service.
- (14) Pain management clinic as set forth in Section 158.231.

FLOOR SKETCH



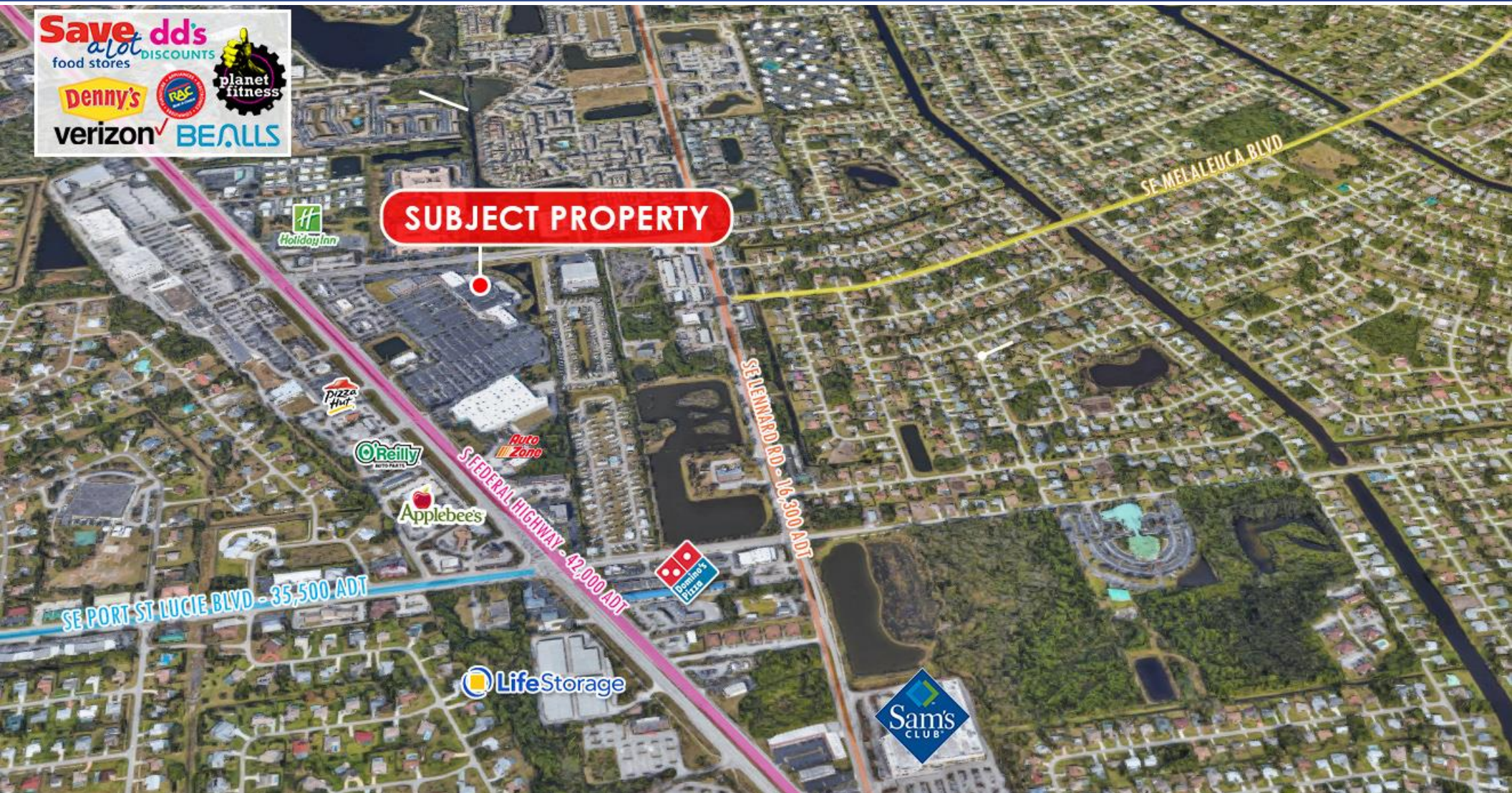
**JEREMIAH BARON
& CO**

COMMERCIAL REAL ESTATE

2100 SE Ocean Blvd. Suite 100
Stuart FL, 34996
www.commercialrealestatellc.com

Conor Mackin
772.286.5744 Office
973.303.1160 Mobile
cmackin@commercialrealestatellc.com

TRADE AREA MAP



**JEREMIAH BARON
& CO**

COMMERCIAL REAL ESTATE

2100 SE Ocean Blvd. Suite 100
Stuart FL, 34996
www.commercialrealestatellc.com

Conor Mackin
772.286.5744 Office
973.303.1160 Mobile
cmackin@commercialrealestatellc.com