

FREESTANDING RETAIL BUILDING

1975 SE Fischer Street, Stuart FL 34997



FOR SALE | \$4,750,000

**JEREMIAH BARON
& CO**

COMMERCIAL REAL ESTATE

2100 SE Ocean Blvd. Suite 100
Stuart FL, 34996
www.commercialrealestatellc.com

Conor Mackin

772.286.5744 Office

973.303.1160 Mobile

cmackin@commercialrealestatellc.com

PROPERTY OVERVIEW

- Outstanding 15,388 sq. ft. freestanding retail building located in a highly coveted, bustling retail corridor in Stuart, Florida.
- This site is brimming with potential, offering the versatility to be utilized as a merchandise showroom space or other retail purposes.
- The expansive layout, combined with high ceilings, provides an inviting atmosphere for customers and allows for a myriad of possibilities in customizing the space to suit your unique vision.
- Site is adjacent to Lowe's and a vibrant shopping plaza that includes Publix, Harbor Freight Tools, Bealls Outlet, as well as popular dining options like Arby's and McDonald's, alongside a variety of other retailers.



PRICE	\$4,750,000
BUILDING SIZE	15,388 SF
BUILDING TYPE	Retail
ACREAGE	1.05
FRONTAGE	+/- 152'
TRAFFIC COUNT	45,000 ADT (from US-1)
YEAR BUILT	2015
CONSTRUCTION TYPE	Masonry
PARKING SPACE	Ample
ZONING	CPUD–Commercial PUD (Stuart)
LAND USE	Commercial
PARCEL ID	38-38-41-016-000-00030-0

NO WARRANTY OR REPRESENTATION, EXPRESS OR IMPLIED, IS MADE AS TO THE ACCURACY OF THE INFORMATION CONTAINED HEREIN, AND THE SAME IS SUBMITTED SUBJECT TO ERRORS, OMISSIONS, CHANGE OF PRICE, RENTAL OR OTHER CONDITIONS, PRIOR SALE, LEASE OR FINANCING, OR WITHDRAWAL WITHOUT NOTICE, AND OF ANY SPECIAL LISTING CONDITIONS IMPOSED BY OUR PRINCIPALS NO WARRANTIES OR REPRESENTATIONS ARE MADE AS TO THE CONDITION OF THE PROPERTY OR ANY HAZARDS CONTAINED THEREIN ARE ANY TO BE IMPLIED.

**JEREMIAH BARON
& CO**
COMMERCIAL REAL ESTATE

2100 SE Ocean Blvd. Suite 100
Stuart FL, 34996
www.commercialrealestatellc.com

Conor Mackin
772.286.5744 Office
973.303.1160 Mobile
cmackin@commercialrealestatellc.com

DEMOGRAPHICS

2023 Population Estimate		2023 Average Household Income		Average Age	
1 Mile	7,547	1 Mile	\$73,352	1 Mile	39.8
3 Mile	97,616	3 Mile	\$94,084	3 Mile	48.8
5 Mile	203,303	5 Mile	\$94,132	5 Mile	48.5

2028 Population Projection		2023 Median Household Income		Median Age	
1 Mile	7,464	1 Mile	\$64,142	1 Mile	39.9
3 Mile	97,287	3 Mile	\$73,296	3 Mile	53.4
5 Mile	207,689	5 Mile	\$72,778	5 Mile	53

**JEREMIAH BARON
& CO**

COMMERCIAL REAL ESTATE

2100 SE Ocean Blvd. Suite 100
Stuart FL, 34996
www.commercialrealestatellc.com

Conor Mackin
772.286.5744 Office
973.303.1160 Mobile
cmackin@commercialrealestatellc.com

ZONING INFORMATION

Adult business (refer to supplemental standards in section 2.06.10)	-
Automatic amusement center and game room	A
Automobile rental/leasing	A
Automobile repair services, major and minor (refer to supplemental standards in section 2.06.05)	A
Automobile sales provided all repair and service shall be done within an enclosed building (refer to supplemental standards in section 2.06.05)	A
Bakeries, retail and/or wholesale warehouses	A
Banks/financial institutions	A
Barbershop, beauty salons, specialty salons	A
Bars	A
Boat building, indoors	A
Boat building, outdoors	-
Boat sales and service (refer to supplemental standards in Section 2.06.05)	A
Boat storage, dry	A
Bowling alleys	A
Car washes	A
Catering shops	A
Clubs, lodges, fraternal organizations	A
Craft distillery	A

Dry cleaning establishment	A
Dry cleaning plant	-
Farm equipment and supply sales establishments, including open storage	A
Flea markets	A
Gasoline or other motor fuel stations (refer to supplemental standards in sections 2.06.05 and 2.06.20)	A
Gasoline or other motor fuel stations, including tank farms (refer to supplemental standards in sections 2.06.05 and 2.06.20)	-
Health clubs	A
Health spas	A
Kennels	A
Laundry establishments (self-service)	A
Manufactured home, mobile home or RV parks	A
Marinas including the sale, display, and storage of new and used boats for sale, and the repair and maintenance of boats.	A
Microbrewery	A
Newspaper or publishing plant	A
Office, business or professional	A
Office, low intensity medical	A
Office, veterinary	A

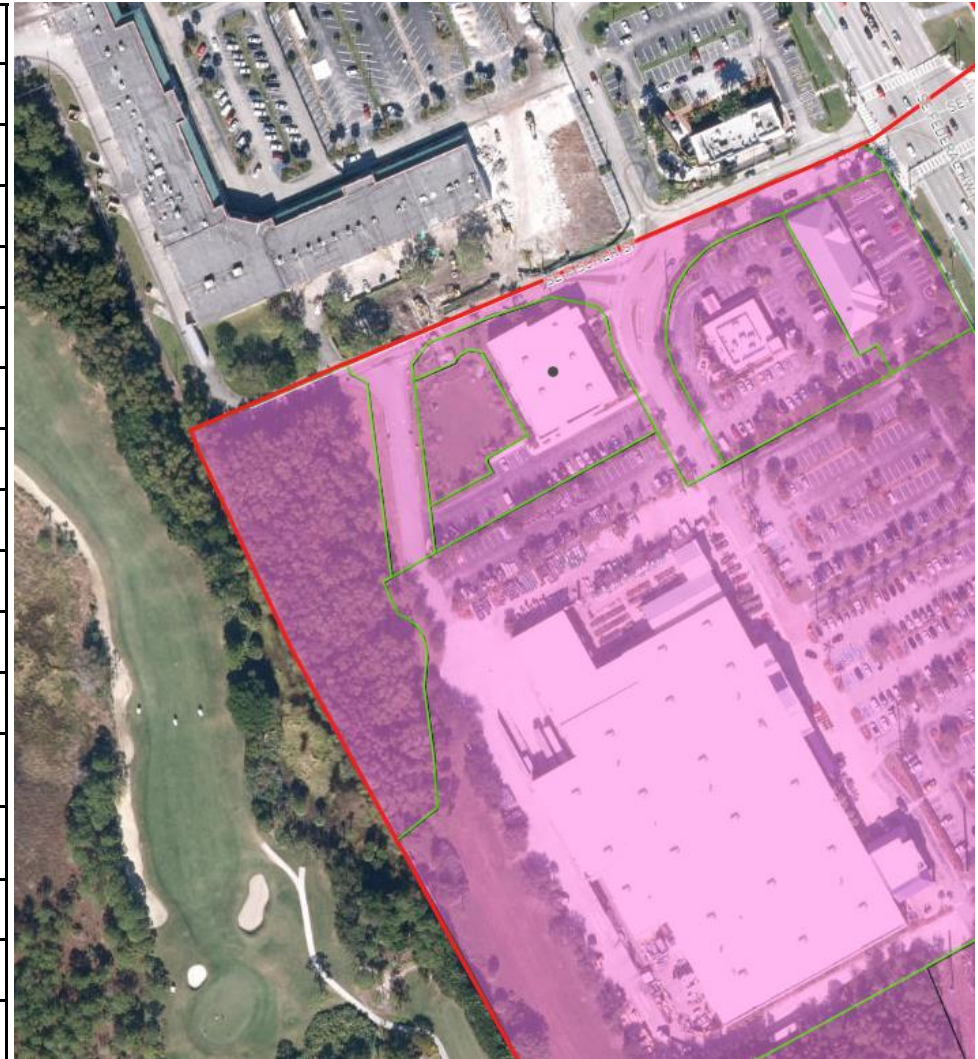
**JEREMIAH BARON
& CO**
COMMERCIAL REAL ESTATE

2100 SE Ocean Blvd. Suite 100
Stuart FL, 34996
www.commercialrealestatellc.com

Conor Mackin
772.286.5744 Office
973.303.1160 Mobile
cmackin@commercialrealestatellc.com

ZONING INFORMATION

Place of public assembly	A
Pool hall/billiard parlor	A
Repair services	A
Restaurants, convenience and general	A
Restaurants, limited	-
Retail, bulk merchandise	A
Retail, department store	A
Retail, furniture store	A
Retail, intensive sales	A
Retail, non-intensive sales and service	A
Retail, regional mall	A
Retail, strip shopping center	A
Rooftop dining areas (refer to supplemental standards in section 2.06.19)	C U
Shooting range, indoor (refer to supplemental standards in section 2.06.16)	A
Skating rink, rolling or ice	A
Studio (art, dance, music, exercise)	A
Theaters	A

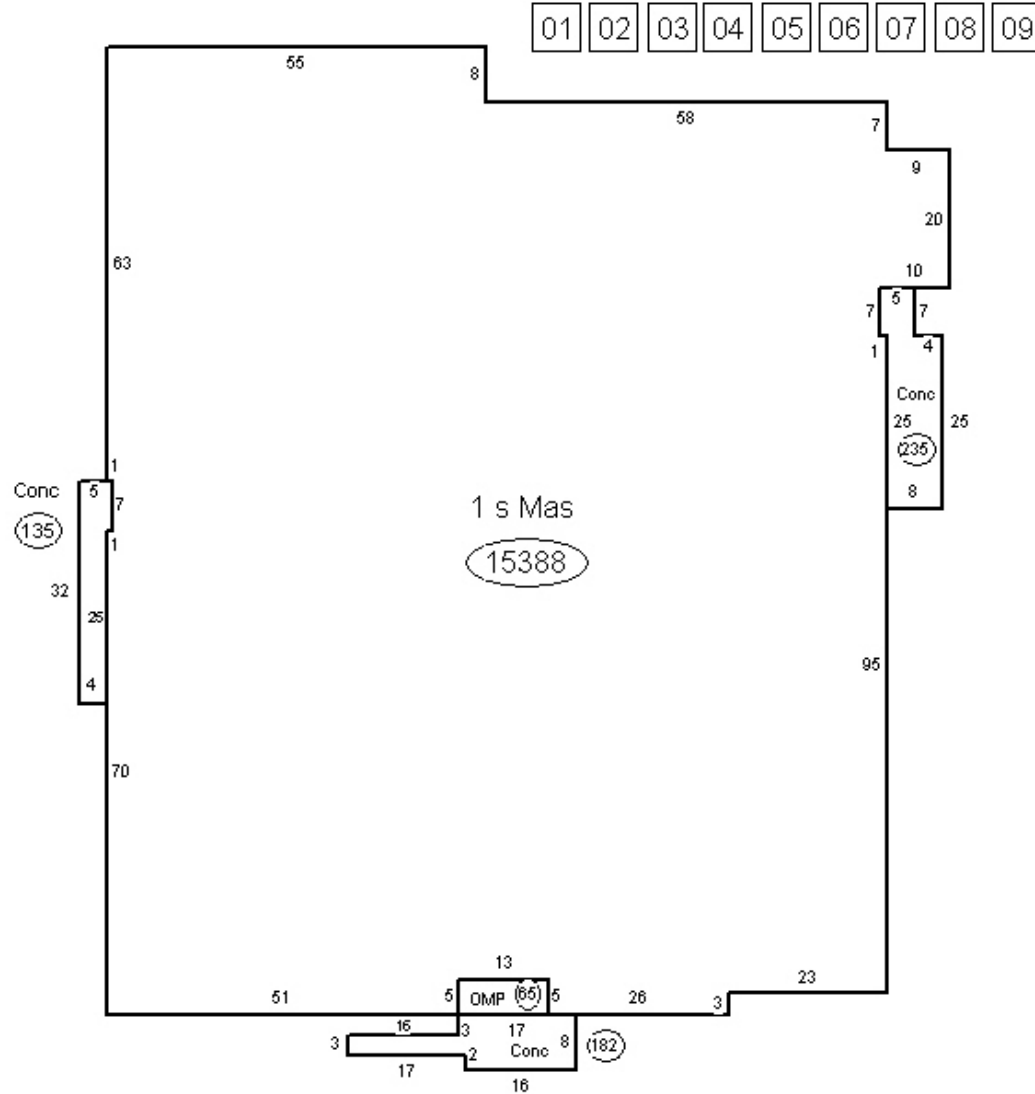


**JEREMIAH BARON
& CO**
COMMERCIAL REAL ESTATE

2100 SE Ocean Blvd. Suite 100
Stuart FL, 34996
www.commercialrealestatellc.com

Conor Mackin
772.286.5744 Office
973.303.1160 Mobile
cmackin@commercialrealestatellc.com

FLOOR SKETCH



**JEREMIAH BARON
& CO**

COMMERCIAL REAL ESTATE

2100 SE Ocean Blvd. Suite 100
Stuart FL, 34996
www.commercialrealestatellc.com

Conor Mackin
772.286.5744 Office
973.303.1160 Mobile
cmackin@commercialrealestatellc.com

TRADE AREA MAP



**JEREMIAH BARON
& CO**
COMMERCIAL REAL ESTATE

2100 SE Ocean Blvd. Suite 100
Stuart FL, 34996
www.commercialrealestatellc.com

Conor Mackin
772.286.5744 Office
973.303.1160 Mobile
cmackin@commercialrealestatellc.com

AREA MAP



WEDGEWOOD COMMONS SHOPPING CENTER

Publix **DOLLAR TREE** **HARBOR FREIGHT TOOLS**
Quality Tools at Ridiculously Low Prices

Edible ARRANGEMENTS **bealls HOME OUTLET** **POWERHOUSE GYM** **FISH TAILS** **centric**

JEREMIAH BARON & CO
COMMERCIAL REAL ESTATE

2100 SE Ocean Blvd. Suite 100
Stuart FL, 34996
www.commercialrealestatellc.com

Conor Mackin
772.286.5744 Office
973.303.1160 Mobile
cmackin@commercialrealestatellc.com