

CHILDCARE FACILITY WITH REAL ESTATE

7215 Waelti Dr. Melbourne, FL



FOR SALE | Call for Details

**JEREMIAH BARON
& CO**

COMMERCIAL REAL ESTATE

Christopher Sanz

772.286.5744 Office

772.418.0327 Mobile

csanz@commercialrealestatellc.com

Carlos Pelaez

772.286.5744 Office

772.215.3436 Mobile

cpelaez@commercialrealestatellc.com

PROPERTY OVERVIEW

- Welcome to an exceptional opportunity for investors and entrepreneurs in the childcare industry!
- This fully operational daycare facility offers a perfect blend of functionality, convenience, and growth potential.
- There's 30 students currently enrolled. The current license allows 105 students. The building itself can hold up to 145 students if license is updated to include all of the property
- Located in a bustling and family-friendly neighborhood of Viera, this property is designed to cater to the needs of young families and provide a safe, engaging environment for children.
- With over 6,300 sq ft and over 1.20 acres, this property is poised for growth.



PRICE Call for Details

BUILDING SIZE 6,347 SF

BUILDING TYPE Day Care

ACREAGE 1.26 AC

FRONTAGE 218'

TRAFFIC COUNT 37,773

YEAR BUILT 1981

CONSTRUCTION TYPE Wood Frame

PARKING SPACE 9

ZONING BU1

LAND USE Day Care

PARCEL ID 26-36-12-DE-22-11

NO WARRANTY OR REPRESENTATION, EXPRESS OR IMPLIED, IS MADE AS TO THE ACCURACY OF THE INFORMATION CONTAINED HEREIN, AND THE SAME IS SUBMITTED SUBJECT TO ERRORS, OMISSIONS, CHANGE OF PRICE, RENTAL OR OTHER CONDITIONS, PRIOR SALE, LEASE OR FINANCING, OR WITHDRAWAL WITHOUT NOTICE, AND OF ANY SPECIAL LISTING CONDITIONS IMPOSED BY OUR PRINCIPALS NO WARRANTIES OR REPRESENTATIONS ARE MADE AS TO THE CONDITION OF THE PROPERTY OR ANY HAZARDS CONTAINED THEREIN ARE ANY TO BE IMPLIED.

**JEREMIAH BARON
& CO**

COMMERCIAL REAL ESTATE

Christopher Sanz

772.286.5744 Office

772.418.0327 Mobile

csanz@commercialrealestatellc.com

Carlos Pelaez

772.286.5744 Office

772.215.3436 Mobile

cpelaez@commercialrealestatellc.com

INVESTMENT OVERVIEW

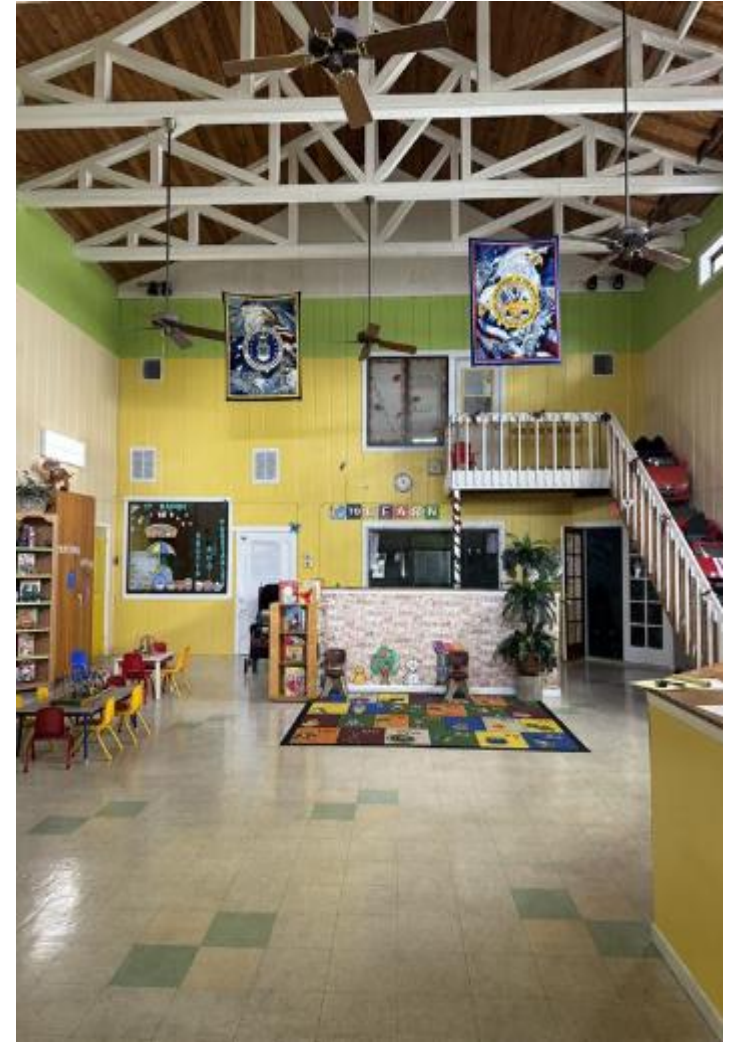
Property Highlights:

Turnkey Daycare Facility: The building is fully equipped with state-of-the-art facilities tailored for childcare services, including multiple classrooms, a large activity area, and age-appropriate play zones.

- **Spacious and Functional Layout:** Offering over 6,300 sq ft, the layout includes multiple classrooms & restrooms, a commercial-grade kitchen, and dedicated staff areas. The open-plan design promotes a stimulating and nurturing atmosphere for children.
- **Outdoor Play Area:** A secure and expansive outdoor playground provides ample space for children to play and explore, promoting physical activity and social interaction.
- **Safety and Security:** Equipped with modern security systems, including surveillance cameras and secure entry points, ensuring the safety of both children and staff.
- **Modern Amenities:** Recent upgrades include energy-efficient lighting, updated HVAC systems, and child-friendly fixtures. The facility is move-in ready with minimal additional investment required.
- **High Visibility and Accessibility:** Strategically located with easy access to major roads and ample parking, making drop-off and pick-up convenient for parents. The property benefits from high foot traffic and is situated in a vibrant community with a strong demand for quality childcare services.

Investment Potential:

This property is an ideal investment for those looking to enter or expand within the daycare sector. With its established infrastructure, the facility is poised for immediate operational success and offers potential for growth and development.



**JEREMIAH BARON
& CO**

COMMERCIAL REAL ESTATE

Christopher Sanz

772.286.5744 Office

772.418.0327 Mobile

csanz@commercialrealestatellc.com

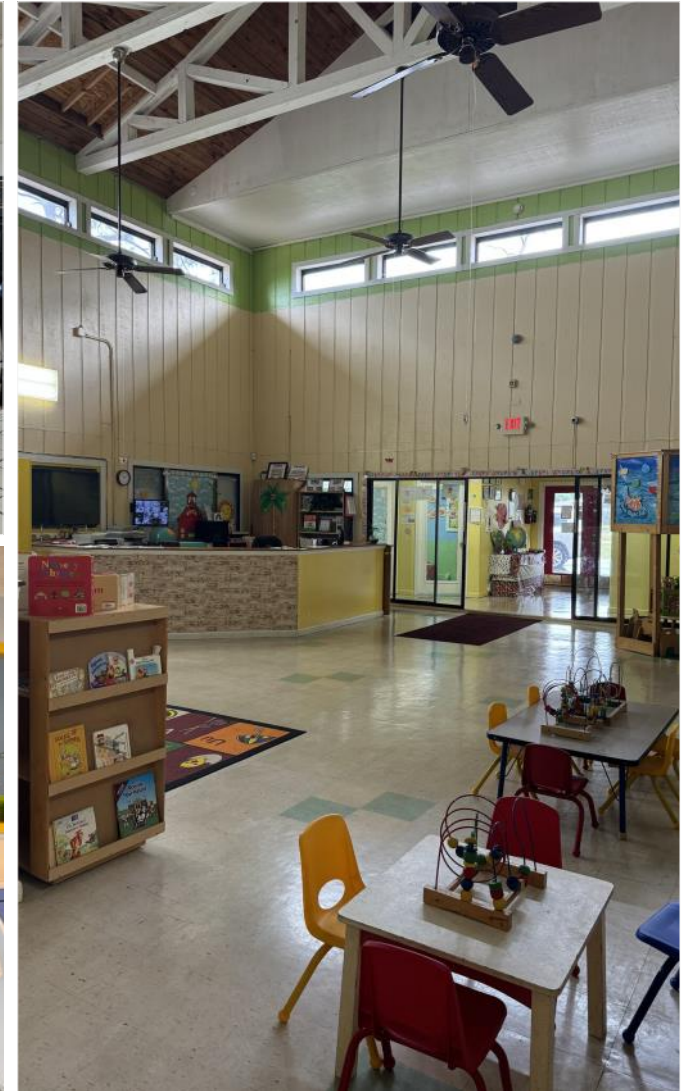
Carlos Pelaez

772.286.5744 Office

772.215.3436 Mobile

cpelaez@commercialrealestatellc.com

SITE PHOTOS



**JEREMIAH BARON
& CO**

COMMERCIAL REAL ESTATE

Christopher Sanz

772.286.5744 Office

772.418.0327 Mobile

csanz@commercialrealestatellc.com

Carlos Pelaez

772.286.5744 Office

772.215.3436 Mobile

cpelaez@commercialrealestatellc.com

DEMOGRAPHICS

2024 Population Estimate		2024 Average Household Income		Average Age	
1 Mile	5,012	1 Mile	\$108,049	1 Mile	49
3 Mile	31,831	3 Mile	\$120,492	3 Mile	48
5 Mile	82,616	5 Mile	\$118,184	5 Mile	46

2029 Population Projection		2024 Median Household Income		Median Age	
1 Mile	5,489	1 Mile	\$81,771	1 Mile	55
3 Mile	34,802	3 Mile	\$99,657	3 Mile	52
5 Mile	90,759	5 Mile	\$93,946	5 Mile	49

**JEREMIAH BARON
& CO**

COMMERCIAL REAL ESTATE

Christopher Sanz

772.286.5744 Office

772.418.0327 Mobile

csanz@commercialrealestatellc.com

Carlos Pelaez

772.286.5744 Office

772.215.3436 Mobile

cpelaez@commercialrealestatellc.com

AERIAL VIEW



**JEREMIAH BARON
& CO**

COMMERCIAL REAL ESTATE

Christopher Sanz

772.286.5744 Office

772.418.0327 Mobile

csanz@commercialrealestatellc.com

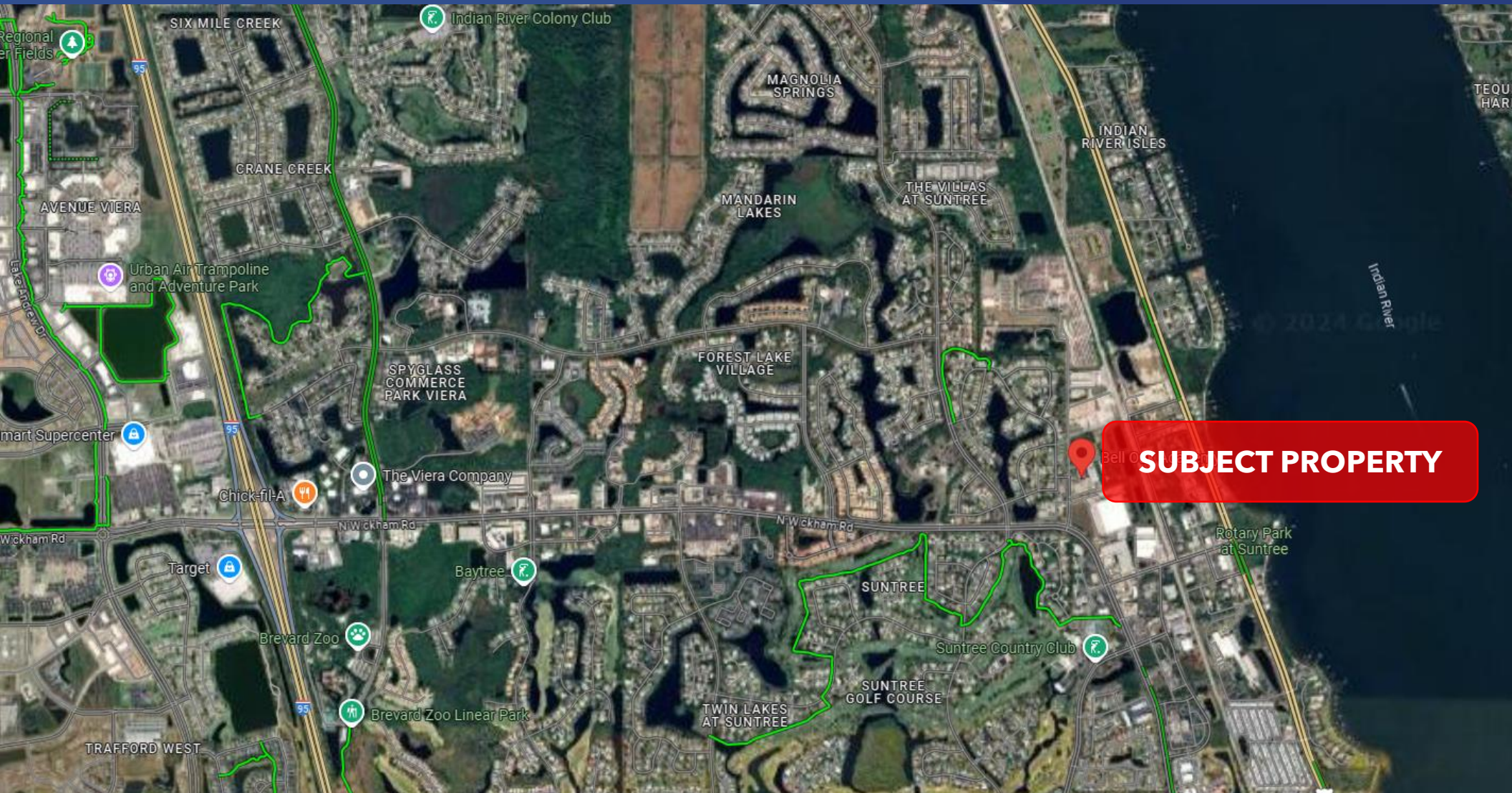
Carlos Pelaez

772.286.5744 Office

772.215.3436 Mobile

cpelaez@commercialrealestatellc.com

TRADE AREA MAP



SUBJECT PROPERTY

**JEREMIAH BARON
& CO**
COMMERCIAL REAL ESTATE

Christopher Sanz
772.286.5744 Office
772.418.0327 Mobile
csanz@commercialrealestatellc.com

Carlos Pelaez
772.286.5744 Office
772.215.3436 Mobile
cpelaez@commercialrealestatellc.com