

# PRIVATE OFFICE SUITE

1111 Martin Downs Blvd. Suite B, Palm City FL 34990



FOR LEASE | \$600.00/mo. Gross

**JEREMIAH BARON  
& CO**

COMMERCIAL REAL ESTATE

2100 SE Ocean Blvd. Suite 100  
Stuart FL, 34996  
[www.commercialrealestatellc.com](http://www.commercialrealestatellc.com)

**Jaime Oldenberg**  
772.286.5744 Office  
772.370.6467 Mobile  
[joldenberg@commercialrealestatellc.com](mailto:joldenberg@commercialrealestatellc.com)

# PROPERTY OVERVIEW

- Prime office suite located just off Martin Downs Blvd. in Palm City! This fully furnished 100 SF second-floor office is ideal for small business owners or professionals seeking a turnkey solution.
- Rent includes utilities and high-speed internet, offering convenience and cost savings. The suite also benefits from excellent visibility, with signage on Martin Downs Blvd.
- Perfectly situated near local amenities and easy highway access, this space is ready to meet your business needs.



<b>LEASE RATE</b>	\$600.00/mo. Gross
<b>UNIT SIZE</b>	100 SF
<b>BUILDING SIZE</b>	6,235 SF
<b>BUILDING TYPE</b>	Office/Store
<b>ACREAGE</b>	0.42 AC
<b>FRONTAGE</b>	142'
<b>TRAFFIC COUNT</b>	42,500 ADT
<b>YEAR BUILT</b>	1982
<b>CONSTRUCTION TYPE</b>	Block with Stucco
<b>PARKING SPACE</b>	22
<b>ZONING</b>	Old Palm City Redevelopment
<b>LAND USE</b>	CRA Center
<b>PARCEL ID</b>	17-38-41-010-011-00010-1

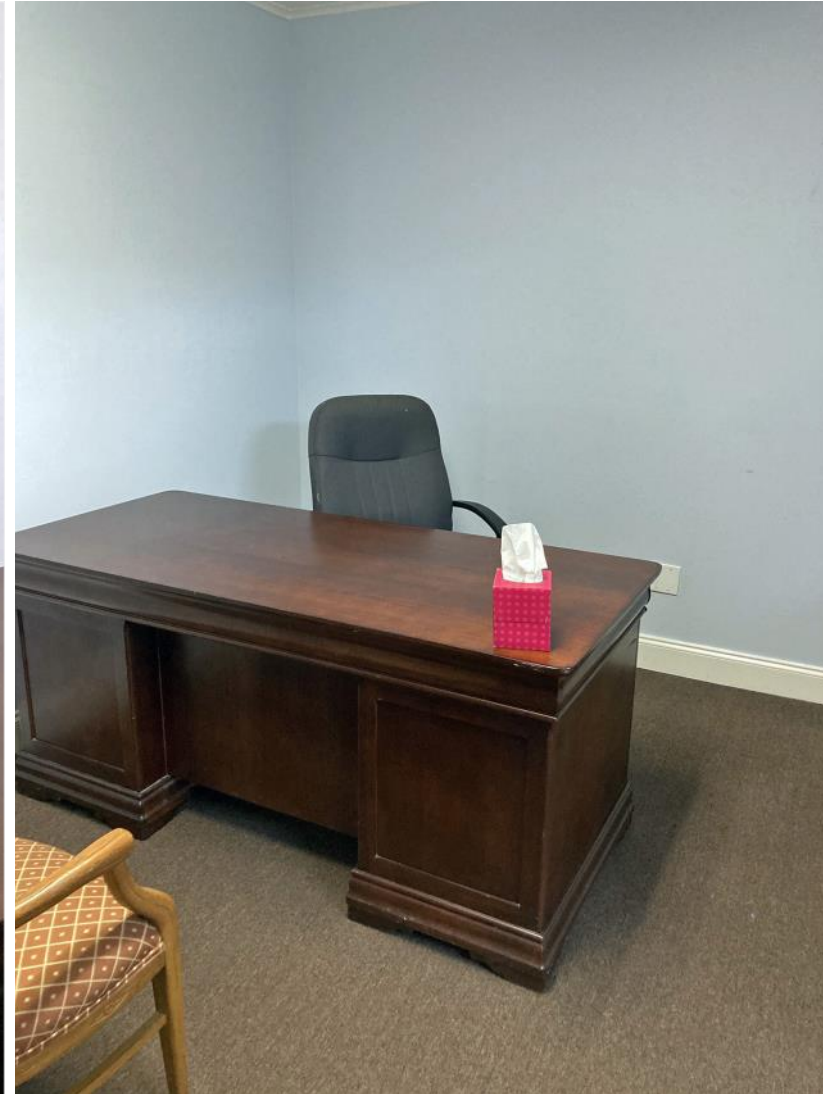
NO WARRANTY OR REPRESENTATION, EXPRESS OR IMPLIED, IS MADE AS TO THE ACCURACY OF THE INFORMATION CONTAINED HEREIN, AND THE SAME IS SUBMITTED SUBJECT TO ERRORS, OMISSIONS, CHANGE OF PRICE, RENTAL OR OTHER CONDITIONS, PRIOR SALE, LEASE OR FINANCING, OR WITHDRAWAL WITHOUT NOTICE, AND OF ANY SPECIAL LISTING CONDITIONS IMPOSED BY OUR PRINCIPALS NO WARRANTIES OR REPRESENTATIONS ARE MADE AS TO THE CONDITION OF THE PROPERTY OR ANY HAZARDS CONTAINED THEREIN ARE ANY TO BE IMPLIED.

**JEREMIAH BARON  
& CO**  
COMMERCIAL REAL ESTATE

2100 SE Ocean Blvd. Suite 100  
Stuart FL, 34996  
[www.commercialrealestatellc.com](http://www.commercialrealestatellc.com)

**Jaime Oldenberg**  
772.286.5744 Office  
772.370.6467 Mobile  
[joldenberg@commercialrealestatellc.com](mailto:joldenberg@commercialrealestatellc.com)

# INTERIOR PHOTOS



**JEREMIAH BARON  
& CO**

COMMERCIAL REAL ESTATE

2100 SE Ocean Blvd. Suite 100  
Stuart FL, 34996  
[www.commercialrealestatellc.com](http://www.commercialrealestatellc.com)

**Jaime Oldenborg**  
772.286.5744 Office  
772.370.6467 Mobile  
[joldenborg@commercialrealestatellc.com](mailto:joldenborg@commercialrealestatellc.com)

# DEMOGRAPHICS

2024 Population Estimate		2024 Average Household Income		Average Age	
1 Mile	7,325	1 Mile	\$81,823	1 Mile	50.1
3 Mile	46,837	3 Mile	\$91,820	3 Mile	46.8
5 Mile	98,434	5 Mile	\$94,655	5 Mile	47.5

2029 Population Projection		2029 Median Household Income		Median Age	
1 Mile	7,804	1 Mile	\$62,539	1 Mile	55.3
3 Mile	49,240	3 Mile	\$66,637	3 Mile	50.0
5 Mile	104,593	5 Mile	\$66,995	5 Mile	47.5

**JEREMIAH BARON  
& CO**

**COMMERCIAL REAL ESTATE**

2100 SE Ocean Blvd. Suite 100  
Stuart FL, 34996  
[www.commercialrealestatellc.com](http://www.commercialrealestatellc.com)

**Jaime Oldenberg**  
772.286.5744 Office  
772.370.6467 Mobile  
[joldenberg@commercialrealestatellc.com](mailto:joldenberg@commercialrealestatellc.com)

# ZONING INFORMATION

<b>Palm City Redevelopment</b>	<b>Core</b>
Business and professional offices	P
Construction services, limited	P
Hotels, motels, resorts spas	P
Marinas	-
Medical offices	P
Parking lots and garages	P
Restaurants	P
Retail and services, limited impact	P
Retail and services, general impact	P
Institutional uses, limited impact	P
Institutional uses, general impact	P
Limited impact industries	-
Extensive impact industrial industries	-

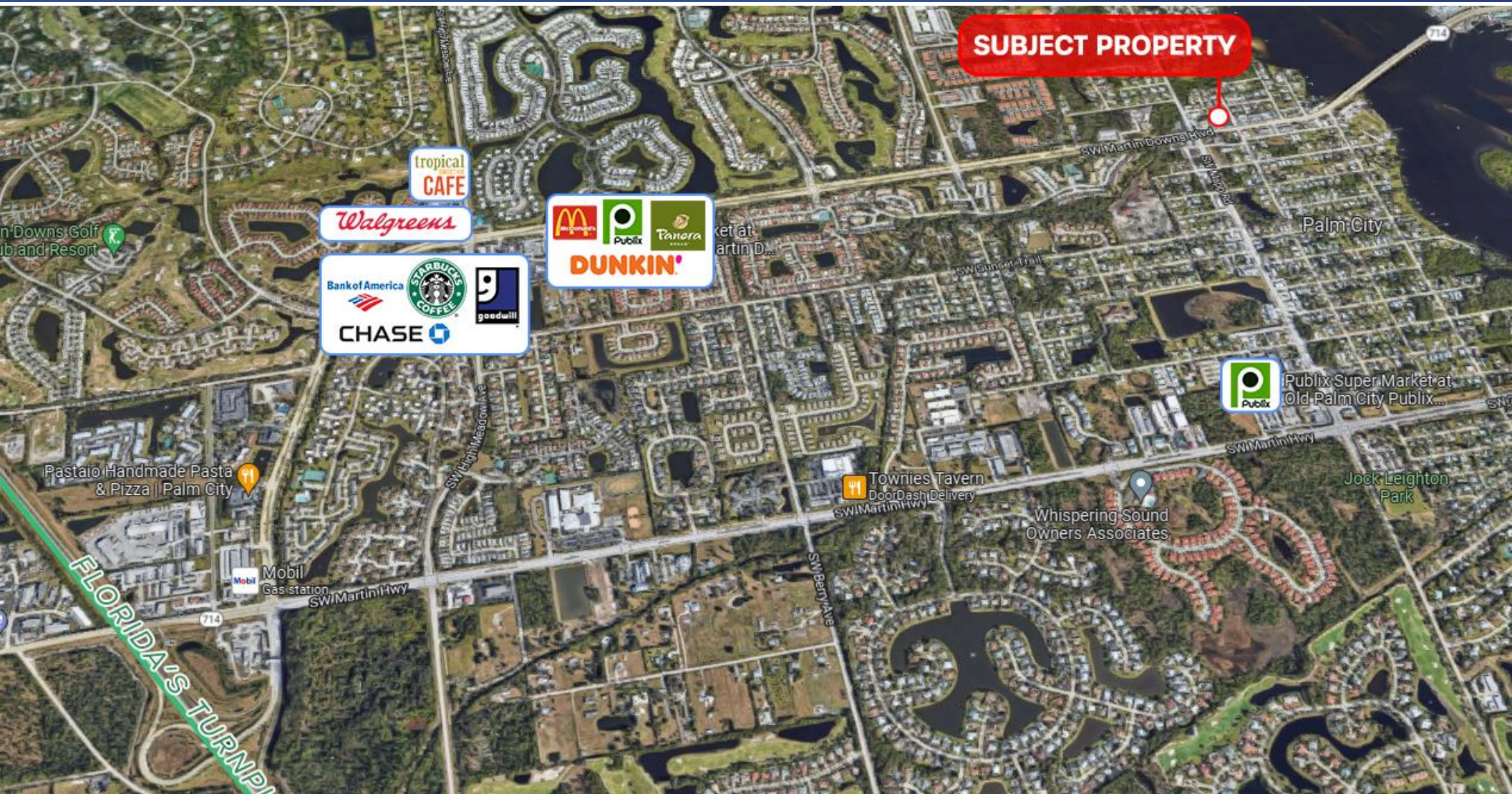
**JEREMIAH BARON  
& CO**

**COMMERCIAL REAL ESTATE**

2100 SE Ocean Blvd. Suite 100  
Stuart FL, 34996  
[www.commercialrealestatellc.com](http://www.commercialrealestatellc.com)

**Jaime Oldenberg**  
772.286.5744 Office  
772.370.6467 Mobile  
[joldenberg@commercialrealestatellc.com](mailto:joldenberg@commercialrealestatellc.com)

# TRADE AREA MAP



**JEREMIAH BARON  
& CO**

COMMERCIAL REAL ESTATE

2100 SE Ocean Blvd. Suite 100  
Stuart FL, 34996  
[www.commercialrealestatellc.com](http://www.commercialrealestatellc.com)

**Jaime Oldenberg**  
772.286.5744 Office  
772.370.6467 Mobile  
[joldenberg@commercialrealestatellc.com](mailto:joldenberg@commercialrealestatellc.com)