

TURNKEY BARBER SHOP

Port St. Lucie, FL



FOR SALE | \$100,000

**JEREMIAH BARON
& CO**

COMMERCIAL REAL ESTATE

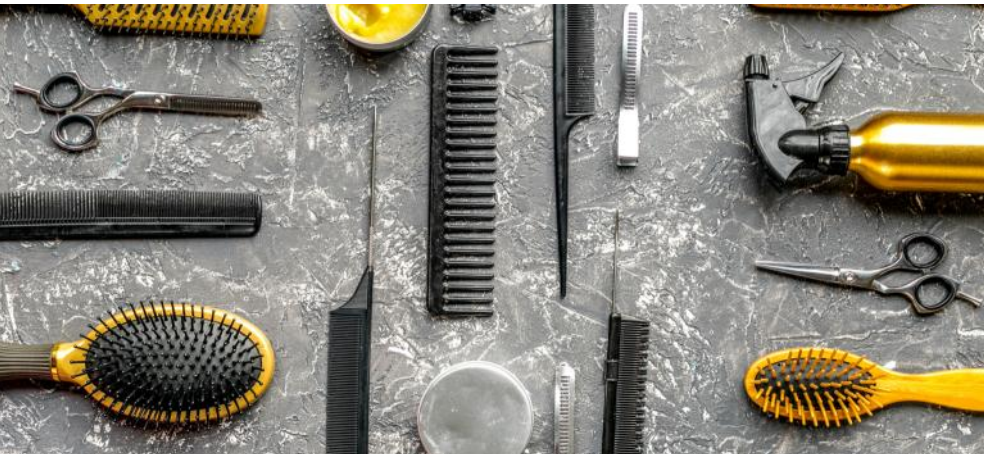
500 SE Osceola St.
Stuart, FL 34994
www.commercialrealestatellc.com

Christopher Sanz
772.286.5744 Office
772.418.0327 Mobile
csanz@commercialrealestatellc.com

Carlos Pelaez
772.286.5744 Office
772.215.3436 Mobile
cpelaez@commercialrealestatellc.com

BUSINESS OVERVIEW

- This is a rare opportunity to acquire a well-established barber shop located in a densely populated neighborhood with excellent foot traffic and visibility. Operating from the same location for over five years, the business boasts a loyal, repeat clientele and a strong local reputation for quality and consistency.
- The shop is fully equipped, including barber chairs, stations, mirrors, and tools as well as the interior decorations which are a must see. Its retro-inspired, nostalgic experience, vibrant layout creates a welcoming and memorable atmosphere for clients. The space is leased at an affordable rate with a cooperative and responsive landlord. Photos available upon NDA signing.
- All licenses and permits are current, allowing for a smooth ownership transition. Included in the sale are all furniture and equipment, branding and signage, and inventory – making this a true turnkey operation.



PRICE

\$100,000

OCCUPYING UNIT SIZE

500 SF

BUILDING TYPE

Retail

TRAFFIC COUNT

43,400 AADT

PARKING SPACE

Ample

ZONING

CG

LAND USE

Commercial

NO WARRANTY OR REPRESENTATION, EXPRESS OR IMPLIED, IS MADE AS TO THE ACCURACY OF THE INFORMATION CONTAINED HEREIN, AND THE SAME IS SUBMITTED SUBJECT TO ERRORS, OMISSIONS, CHANGE OF PRICE, RENTAL OR OTHER CONDITIONS, PRIOR SALE, LEASE OR FINANCING, OR WITHDRAWAL WITHOUT NOTICE, AND OF ANY SPECIAL LISTING CONDITIONS IMPOSED BY OUR PRINCIPALS NO WARRANTIES OR REPRESENTATIONS ARE MADE AS TO THE CONDITION OF THE PROPERTY OR ANY HAZARDS CONTAINED THEREIN ARE ANY TO BE IMPLIED.

**JEREMIAH BARON
& CO**
COMMERCIAL REAL ESTATE

500 SE Osceola St.
Stuart, FL 34994
www.commercialrealestatellc.com

Christopher Sanz
772.286.5744 Office
772.418.0327 Mobile
csanz@commercialrealestatellc.com

Carlos Pelaez
772.286.5744 Office
772.215.3436 Mobile
cpelaez@commercialrealestatellc.com

DEMOGRAPHICS

2024 Population Estimate		2024 Average Household Income		Average Age	
1 Mile	9,029	1 Mile	\$82,973	1 Mile	41.5
3 Mile	60,191	3 Mile	\$80,811	3 Mile	42.9
5 Mile	134,449	5 Mile	\$78,457	5 Mile	43.4
2029 Population Projection		2024 Median Household Income		Median Age	
1 Mile	10,832	1 Mile	\$68,867	1 Mile	42.2
3 Mile	72,368	3 Mile	\$66,098	3 Mile	43.6
5 Mile	161,850	5 Mile	\$65,942	5 Mile	44.4

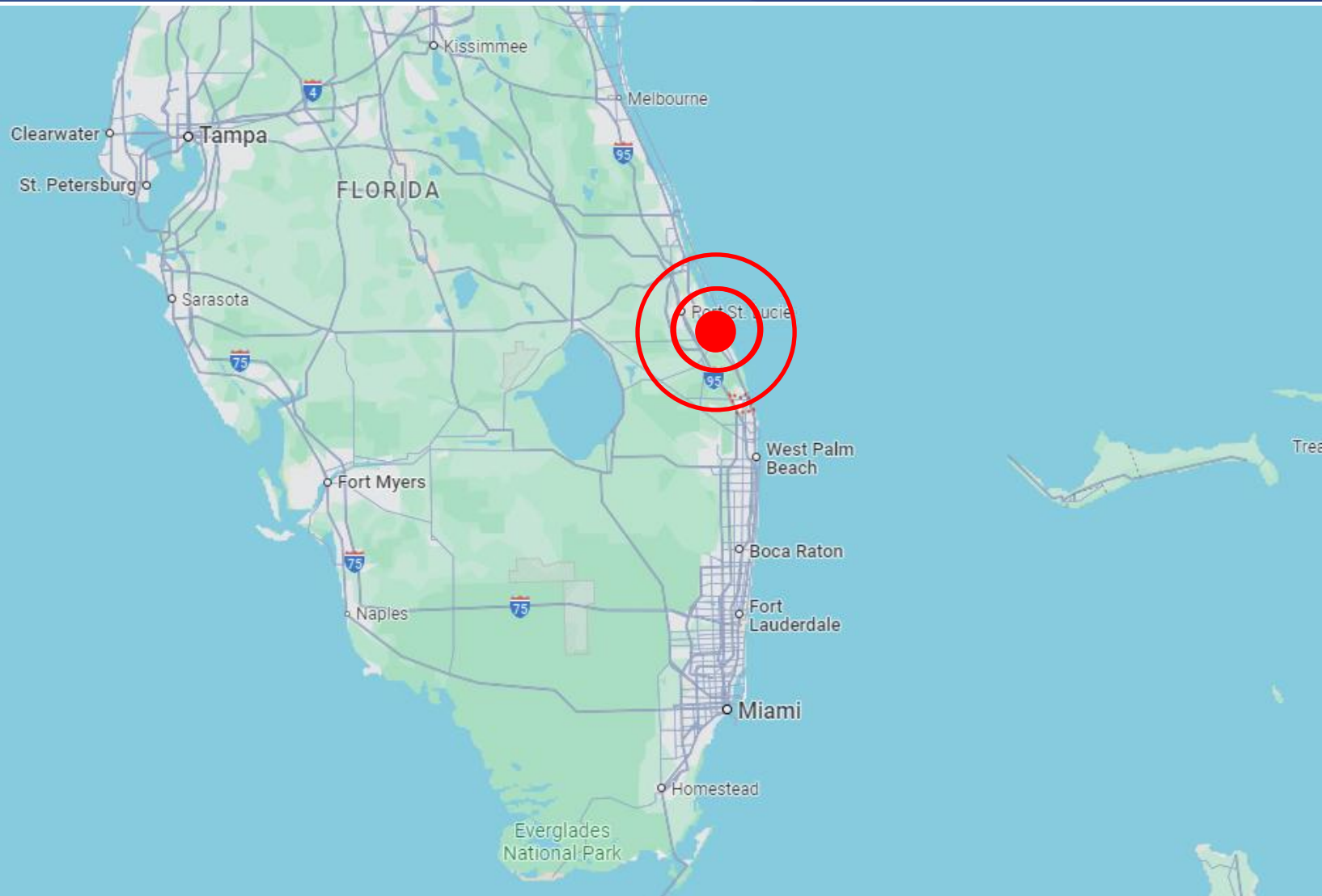
**JEREMIAH BARON
& CO**
COMMERCIAL REAL ESTATE

500 SE Osceola St.
Stuart, FL 34994
www.commercialrealestatellc.com

Christopher Sanz
772.286.5744 Office
772.418.0327 Mobile
csanz@commercialrealestatellc.com

Carlos Pelaez
772.286.5744 Office
772.215.3436 Mobile
cpelaez@commercialrealestatellc.com

REGIONAL MAP



**JEREMIAH BARON
& CO**

COMMERCIAL REAL ESTATE

500 SE Osceola St.
Stuart, FL 34994
www.commercialrealestatellc.com

Christopher Sanz
772.286.5744 Office
772.418.0327 Mobile
csanz@commercialrealestatellc.com

Carlos Pelaez
772.286.5744 Office
772.215.3436 Mobile
cpelaez@commercialrealestatellc.com