

# TURN-KEY PROFESSIONAL OR MEDICAL OFFICE

1001 N US Highway 1, Fort Pierce FL 34950



FOR SALE | \$1,100,000

**JEREMIAH BARON  
& CO**

COMMERCIAL REAL ESTATE

500 SE Osceola Street  
Stuart FL, 34994  
[www.commercialrealestatellc.com](http://www.commercialrealestatellc.com)

**Conor Mackin**  
772.286.5744 Office  
772.291.8443 Mobile  
[cmackin@commercialrealestatellc.com](mailto:cmackin@commercialrealestatellc.com)

# PROPERTY OVERVIEW

- Fully built out for medical or professional services with a large waiting room, reception, conference room, and multiple private offices, each featuring exterior transom windows and audio/intercom wiring.
- Move-in ready space ideal for medical, wellness, executive, or other professional service uses.
- Interior includes high-end finishes such as 9' ceilings, solid core doors, floor-to-ceiling designer porcelain tile, tray ceilings, LED lighting, sound-insulated walls/ceilings, and a 17-speaker audio system adjustable by room. Two restrooms, including one with a shower.
- Excellent visibility on the main road directly across from the Fort Pierce Yacht & Ship Marina. Minutes to Downtown Fort Pierce and immediate access to the South Bridge and A1A.



PRICE	\$1,100,000
BUILDING SIZE	2,190 SF
BUILDING TYPE	Professional Office
ACREAGE	0.29 AC
FRONTAGE	96'
TRAFFIC COUNT	29,000 AADT
YEAR BUILT	2015
CONSTRUCTION TYPE	CB Stucco
ZONING	C-3 General Commercial
LAND USE	GC
PARCEL ID	2403-706-0003-000-1

NO WARRANTY OR REPRESENTATION, EXPRESS OR IMPLIED, IS MADE AS TO THE ACCURACY OF THE INFORMATION CONTAINED HEREIN, AND THE SAME IS SUBMITTED SUBJECT TO ERRORS, OMISSIONS, CHANGE OF PRICE, RENTAL OR OTHER CONDITIONS, PRIOR SALE, LEASE OR FINANCING, OR WITHDRAWAL WITHOUT NOTICE, AND OF ANY SPECIAL LISTING CONDITIONS IMPOSED BY OUR PRINCIPALS NO WARRANTIES OR REPRESENTATIONS ARE MADE AS TO THE CONDITION OF THE PROPERTY OR ANY HAZARDS CONTAINED THEREIN ARE ANY TO BE IMPLIED.

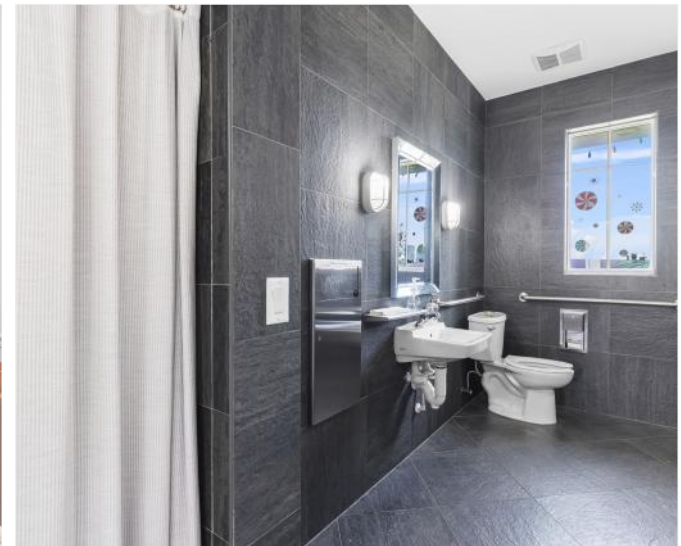
**JEREMIAH BARON  
& CO**  
COMMERCIAL REAL ESTATE

500 SE Osceola Street  
Stuart FL, 34994  
[www.commercialrealestatellc.com](http://www.commercialrealestatellc.com)

**Conor Mackin**  
772.286.5744 Office  
772.291.8443 Mobile  
[cmackin@commercialrealestatellc.com](mailto:cmackin@commercialrealestatellc.com)



# INTERIOR PHOTOS



**JEREMIAH BARON  
& CO**  
COMMERCIAL REAL ESTATE

500 SE Osceola Street  
Stuart FL, 34994  
[www.commercialrealestatellc.com](http://www.commercialrealestatellc.com)

**Conor Mackin**  
772.286.5744 Office  
772.291.8443 Mobile  
[cmackin@commercialrealestatellc.com](mailto:cmackin@commercialrealestatellc.com)



# AERIAL VIEW



**JEREMIAH BARON  
& CO**  
COMMERCIAL REAL ESTATE

500 SE Osceola Street  
Stuart FL, 34994  
[www.commercialrealestatellc.com](http://www.commercialrealestatellc.com)

**Conor Mackin**  
772.286.5744 Office  
772.291.8443 Mobile  
[cmackin@commercialrealestatellc.com](mailto:cmackin@commercialrealestatellc.com)



# DEMOGRAPHICS

Population	2 miles	5 miles	10 miles
2020 Population	25,453	64,114	161,134
2024 Population	27,628	75,244	180,391
2029 Population Projection	33,363	91,747	216,836
Annual Growth 2020-2024	2.1%	4.3%	3.0%
Annual Growth 2024-2029	4.2%	4.4%	4.0%
Median Age	38.3	42.4	45.1
Bachelor's Degree or Higher	14%	21%	23%
U.S. Armed Forces	0	43	223

Income	2 miles	5 miles	10 miles
Avg Household Income	\$45,482	\$62,417	\$71,958
Median Household Income	\$32,345	\$45,969	\$54,455
< \$25,000	4,128	7,693	14,802
\$25,000 - 50,000	2,976	8,017	17,803
\$50,000 - 75,000	1,860	5,957	14,540
\$75,000 - 100,000	623	3,036	8,228
\$100,000 - 125,000	474	2,340	7,599
\$125,000 - 150,000	85	685	2,420
\$150,000 - 200,000	214	1,399	4,009
\$200,000+	146	784	2,600

**JEREMIAH BARON  
& CO**  
COMMERCIAL REAL ESTATE

500 SE Osceola Street  
Stuart FL, 34994  
[www.commercialrealestatellc.com](http://www.commercialrealestatellc.com)

**Conor Mackin**  
772.286.5744 Office  
772.291.8443 Mobile  
[cmackin@commercialrealestatellc.com](mailto:cmackin@commercialrealestatellc.com)

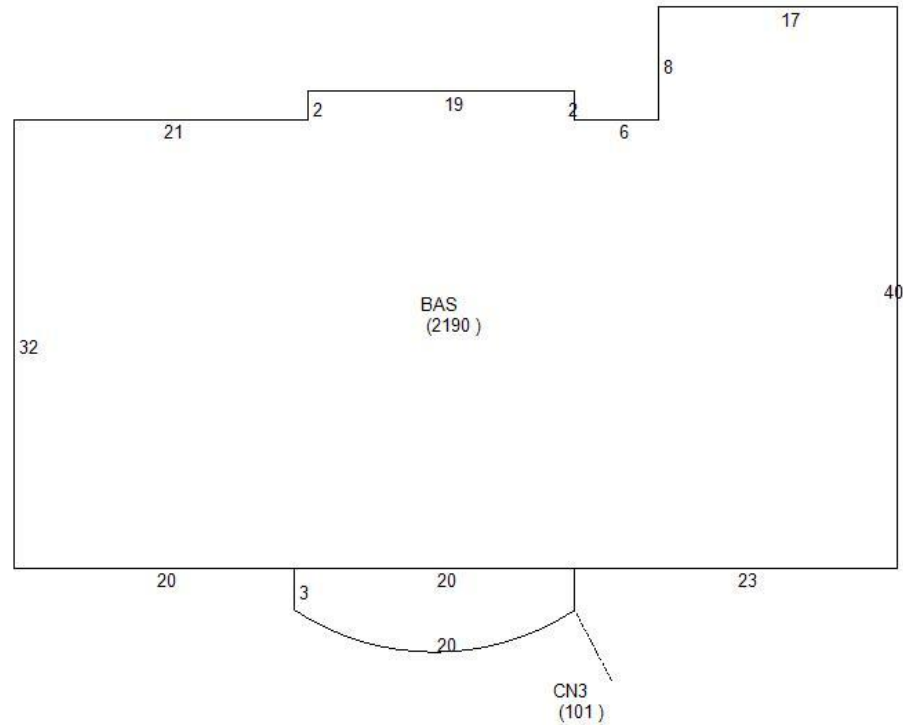
# ZONING INFORMATION

## C-3 Permitted Uses

Office	
-Administrative, Professional, General, Medical Office	P
-Day Labor Employment Agency	P
-Medical and Dental Clinic	P
-Television and Radio Studios	P
Retail Sales and Service, Sales-Oriented (except as noted below)	P
-Art Gallery	P
-Farmers Market or Farm Stand	P
- Flea Market (no accessory uses permitted)	C
-Grocery or Liquor Store	P
-Neighborhood Commercial Sale	P
-Office Supplies and Electronics	P
-Pet Stores	P
Retail Sales and Service, Personal-Service Oriented (except as noted below)	P

-Art Studio	P
-Animal Care Facilities & Service	P
-Animal Grooming Services	P
-Check Cashing/Loan Service	P
-Educational Service Establishments	P
-Laundry and Dry Cleaners Pick-Up	P
-Laundromat	P
-Mortuaries or Funeral Homes	P
-Neighborhood Commercial Services	P
-Pawn Shop	P
-Personal Improvement Service	P
-Veterinary (Without Outdoor Runs)	P

# SITE PLAN



**JEREMIAH BARON  
& CO**

**COMMERCIAL REAL ESTATE**

500 SE Osceola Street  
Stuart FL, 34994  
[www.commercialrealestatellc.com](http://www.commercialrealestatellc.com)

**Conor Mackin**  
772.286.5744 Office  
772.291.8443 Mobile  
[cmackin@commercialrealestatellc.com](mailto:cmackin@commercialrealestatellc.com)



# TRADE AREA MAP



**JEREMIAH BARON  
& CO**  
COMMERCIAL REAL ESTATE

500 SE Osceola Street  
Stuart FL, 34994  
[www.commercialrealestatellc.com](http://www.commercialrealestatellc.com)

**Conor Mackin**  
772.286.5744 Office  
772.291.8443 Mobile  
[cmackin@commercialrealestatellc.com](mailto:cmackin@commercialrealestatellc.com)