

RETAIL SPACE AT ST. LUCIE PALMS PLAZA

8433 S US 1, Port St. Lucie, FL 34952



FOR LEASE | \$15.75/sf NN

**JEREMIAH BARON
& CO**

COMMERCIAL REAL ESTATE

500 SE Osceola Street

Stuart, FL 34994

www.commercialrealestatellc.com

Matthew Mondo

772.286.5744 Office

772.236.7780 Mobile

mmondo@commercialrealestatellc.com

PROPERTY OVERVIEW

An exceptional opportunity to join national retailers, Dollar General & Sherwin-Williams, in the St. Lucie Palms Plaza by leasing this 2,500 sf commercial space. It has a retail front area with offices in the rear. There's a/c throughout & a small mezzanine upstairs. It is perfectly suited for a variety of uses, including general merchandise stores, food stores, apparel & accessories, print shops, and other businesses allowed under county CG Zoning.

The site offers ample parking, a dedicated turning lane, a monument & building sign, and excellent visibility from US-Highway 1, ensuring maximum exposure for your business.

The property is conveniently situated on the intersection of US Highway 1 and Business Park Drive, providing easy access for customers and enhanced visibility.

PRICE	\$15.75/sf NN
SPACE AVAILABLE	*/- 2,500 sf
BUILDING TYPE	Retail
ACREAGE	4.72
FRONTAGE	445'
TRAFFIC COUNT	44,000 AADT
YEAR BUILT	1985
CONSTRUCTION TYPE	CBS
PARKING SPACE	191
ZONING	CG - Commercial General
LAND USE	Shopping Center
PARCEL ID	3422-211-0010-000-6

NO WARRANTY OR REPRESENTATION, EXPRESS OR IMPLIED, IS MADE AS TO THE ACCURACY OF THE INFORMATION CONTAINED HEREIN, AND THE SAME IS SUBMITTED SUBJECT TO ERRORS, OMISSIONS, CHANGE OF PRICE, RENTAL OR OTHER CONDITIONS, PRIOR SALE, LEASE OR FINANCING, OR WITHDRAWAL WITHOUT NOTICE, AND OF ANY SPECIAL LISTING CONDITIONS IMPOSED BY OUR PRINCIPALS NO WARRANTIES OR REPRESENTATIONS ARE MADE AS TO THE CONDITION OF THE PROPERTY OR ANY HAZARDS CONTAINED THEREIN ARE ANY TO BE IMPLIED.



**JEREMIAH BARON
& CO**

COMMERCIAL REAL ESTATE

500 SE Osceola Street

Stuart, FL 34994

www.commercialrealestatellc.com

Matthew Mondo

772.286.5744 Office

772.236.7780 Mobile

mmondo@commercialrealestatellc.com

SITE PHOTOS



**JEREMIAH BARON
& CO**

COMMERCIAL REAL ESTATE

500 SE Osceola Street

Stuart, FL 34994

www.commercialrealestatellc.com

Matthew Mondo

772.286.5744 Office

772.236.7780 Mobile

mmondo@commercialrealestatellc.com

DEMOGRAPHICS

2024 Population Estimate		2024 Average Household Income		Average Age	
1 Mile	5,501	1 Mile	\$52,936	1 Mile	58
3 Mile	61,850	3 Mile	\$69,683	3 Mile	43.6
5 Mile	143,134	5 Mile	\$75,294	5 Mile	43.5

2029 Population Projection		2024 Median Household Income		Median Age	
1 Mile	6,639	1 Mile	\$35,286	1 Mile	64.9
3 Mile	74,123	3 Mile	\$56,803	3 Mile	44.3
5 Mile	171,583	5 Mile	\$62,039	5 Mile	44.4

**JEREMIAH BARON
& CO**

COMMERCIAL REAL ESTATE

500 SE Osceola Street

Stuart, FL 34994

www.commercialrealestatellc.com

Matthew Mondo

772.286.5744 Office

772.236.7780 Mobile

mmondo@commercialrealestatellc.com

ZONING INFORMATION

CG - Commercial General

Purpose. The purpose of this district is to provide and protect an environment suitable for a wide variety of commercial uses intended to serve a population over a large market area, which do not impose undesirable noise, vibration, odor, dust, or offensive effects on the surrounding area, together with such other uses as may be necessary to and compatible with general commercial surroundings. The number in "()" following each identified use corresponds to the SIC Code reference described in Section 3.01.02(B). The number 999 applies to a use not defined under the SIC Code but may be further defined in Section 2.00.00 of this Code.

2. Permitted Uses:

- a. Adjustment/collection and credit reporting services. (732)
- b. Advertising. (731)
- c. Amphitheaters. (999)
- d. Amusements and recreation services - except stadiums, arenas, race tracks, amusement parks. (79)
- e. Apparel and accessory stores. (56)
- f. Automobile dealers. (55)
- g. Automotive rental, repairs and serv. (except body repairs). (751, 753, 754)

- h. Beauty and barber services. (723/724)
- i. Building materials, hardware and garden supply. (52)
- j. Cleaning services. (7349)
- k. Commercial printing. (999)
- l. Communications - except towers. (48)
- m. Computer programming, data processing and other computer serv. (737)
- n. Contract construction serv. (office and interior storage only). (15/16/17)
- o. Cultural activities and nature exhibitions. (999)
- p. Duplicating, mailing, commercial art/photo. and stenog. serv. (733)
- q. Eating places. (581)
- r. Educational services - except public schools. (82)
- s. Engineering, accounting, research, management and related services. (87)
- t. Equipment rental and leasing services. (735)
- u. Executive, legislative, and judicial functions. (91/92/93/94/95/96/97)
- v. Farm labor and management services. (076)
- w. Financial, insurance, and real estate.

- (60/61/62/63/64/65/67)
- x. Food stores. (54)
- y. Funeral and crematory services. (726)
- z. Gasoline service stations. (5541)
- aa. General merchandise stores. (53)
- bb. Health services. (80)
- cc. Home furniture and furnishings. (57)
- dd. Landscape and horticultural services. (078)
- ee. Laundry, cleaning and garment services. (721)
- ff. Membership organizations subject to the provisions of Section 7.10.31. (86)

**JEREMIAH BARON
& CO**

COMMERCIAL REAL ESTATE

500 SE Osceola Street

Stuart, FL 34994

www.commercialrealestatellc.com

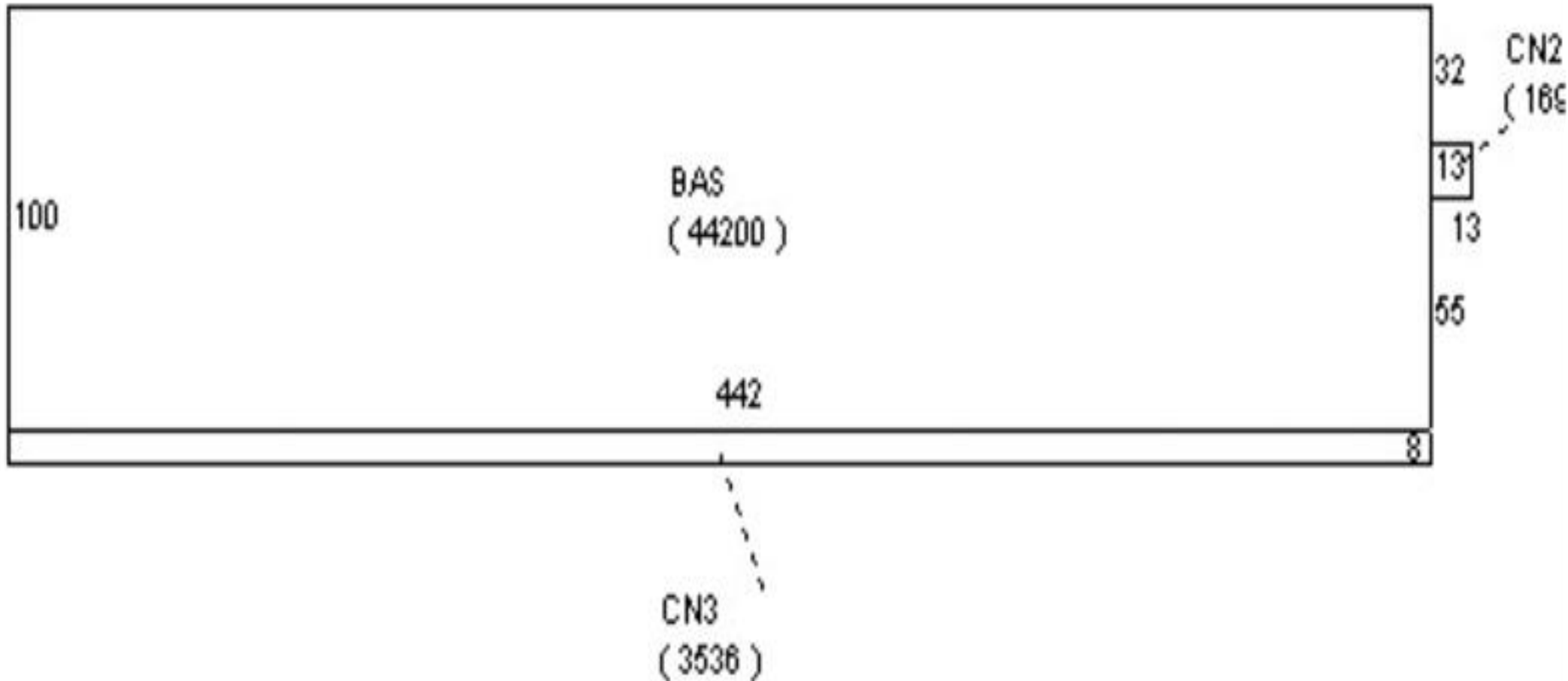
Matthew Mondo

772.286.5744 Office

772.236.7780 Mobile

mmondo@commercialrealestatellc.com

SITE PLAN



**JEREMIAH BARON
& CO**

COMMERCIAL REAL ESTATE

500 SE Osceola Street

Stuart, FL 34994

www.commercialrealestatellc.com

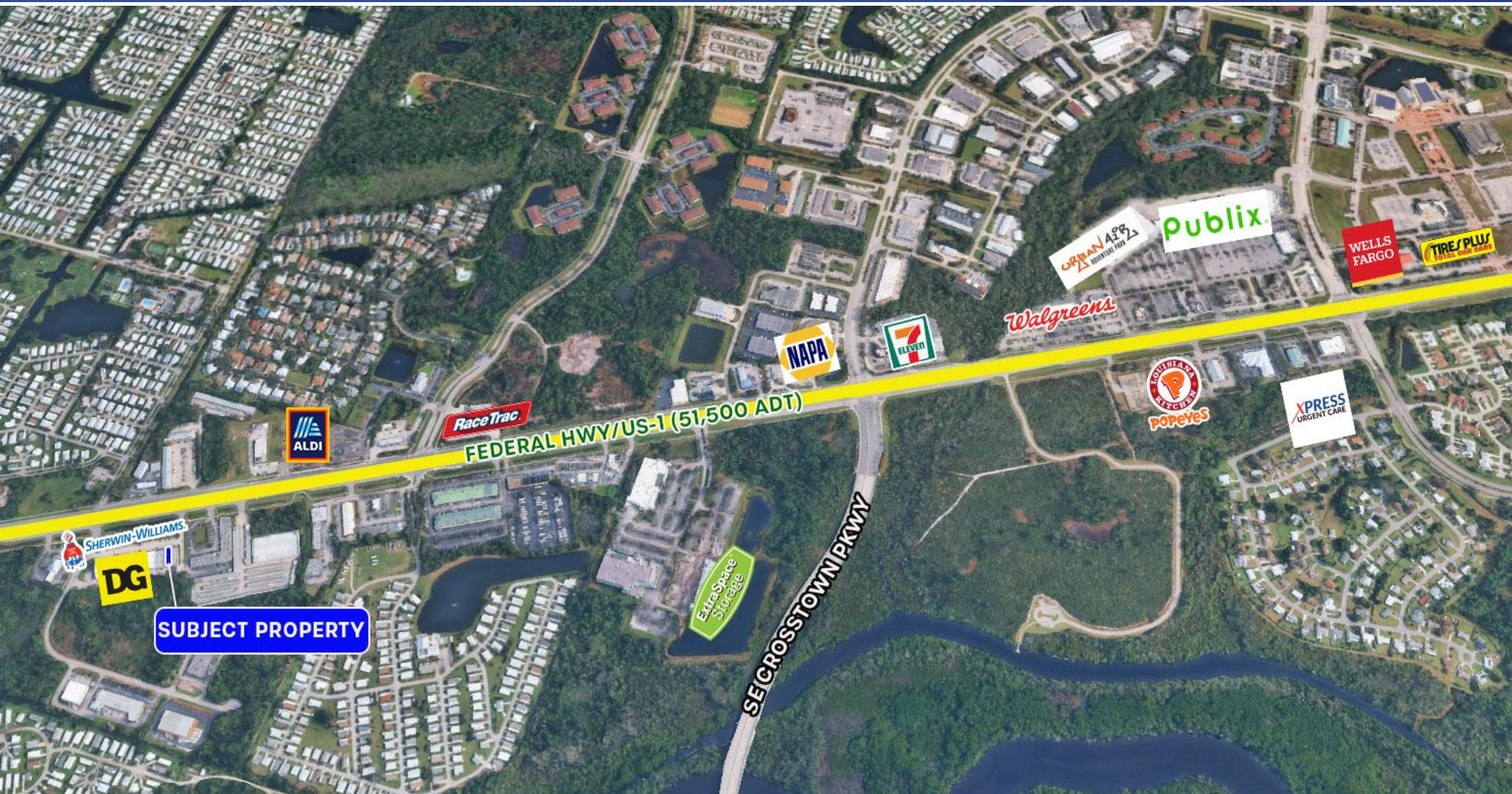
Matthew Mondo

772.286.5744 Office

772.236.7780 Mobile

mmondo@commercialrealestatellc.com

TRADE AREA MAP



**JEREMIAH BARON
& CO**

COMMERCIAL REAL ESTATE

500 SE Osceola Street

Stuart, FL 34994

www.commercialrealestatellc.com

Matthew Mondo

772.286.5744 Office

772.236.7780 Mobile

mmondo@commercialrealestatellc.com