

ESTABLISHED TATTOO STUDIO BUSINESS SALE

3043 SW Port St. Lucie Blvd. Port St. Lucie, FL 34953



FOR SALE | \$319,000

**JEREMIAH BARON
& CO**

COMMERCIAL REAL ESTATE

Office

500 SE Osceola Street
Stuart FL, 34994

www.commercialrealestatellc.com

Matthew Mondo

772.286.5744 Office
772.236.7780 Mobile

mmondo@commercialrealestatellc.com

BUSINESS OVERVIEW

- A rare opportunity to acquire a well-established and reputable tattoo and piercing studio in the heart of Port St. Lucie. Twisted Image Tattoo & Piercing presents a turnkey business with strong brand recognition and a loyal customer base.
- This offering includes a fully transferable lease, along with all equipment, inventory, goodwill, and established social media presence, allowing for a seamless transition to new ownership. The business is currently staffed by a team of six experienced professionals, all of whom are expected to remain in place, ensuring operational continuity and continued customer satisfaction.
- The shop is equipped with a modern point-of-sale (POS) system, providing accurate financial tracking and reporting. With an established foundation already in place, there is significant upside potential for a new owner to grow revenue through expanded services, marketing efforts, or extended hours.
- Detailed financial information is available upon request, subject to the execution of an NDA.

Do not contact or disturb employees. All showings and inquiries must be arranged through the listing associate.

PRICE	\$319,000
LEASE	Transferable
FINANCIALS	Available with NDA
POS SYSTEM	Included (for reporting & tracking)
FF&E	Included
INVENTORY	Included
EMPLOYEES	6 (expected to remain)
TRAINING/TRANSITION SUPPORT	Yes
YEARS IN OPERATION	20 Years
CUSTOMER BASE	Established / repeat clientele
EXPANSION POTENTIAL	Yes

NO WARRANTY OR REPRESENTATION, EXPRESS OR IMPLIED, IS MADE AS TO THE ACCURACY OF THE INFORMATION CONTAINED HEREIN, AND THE SAME IS SUBMITTED SUBJECT TO ERRORS, OMISSIONS, CHANGE OF PRICE, RENTAL OR OTHER CONDITIONS, PRIOR SALE, LEASE OR FINANCING, OR WITHDRAWAL WITHOUT NOTICE, AND OF ANY SPECIAL LISTING CONDITIONS IMPOSED BY OUR PRINCIPALS NO WARRANTIES OR REPRESENTATIONS ARE MADE AS TO THE CONDITION OF THE PROPERTY OR ANY HAZARDS CONTAINED THEREIN ARE ANY TO BE IMPLIED.

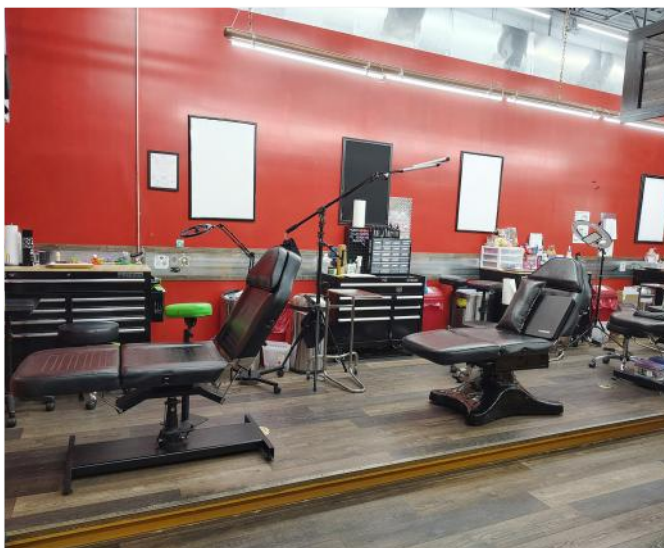
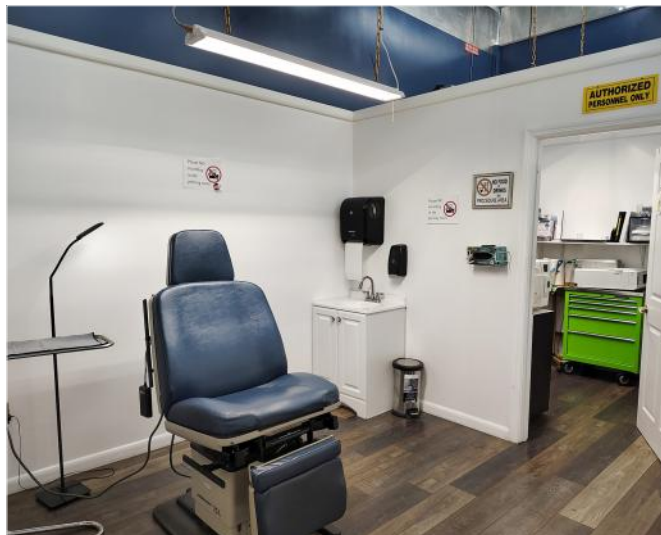


**JEREMIAH BARON
& CO**
COMMERCIAL REAL ESTATE

Office
500 SE Osceola Street
Stuart FL, 34994
www.commercialrealestatellc.com

Matthew Mondo
772.286.5744 Office
772.236.7780 Mobile
mmondo@commercialrealestatellc.com

INTERIOR PHOTOS



**JEREMIAH BARON
& CO**

COMMERCIAL REAL ESTATE

Office

500 SE Osceola Street
Stuart FL, 34994

www.commercialrealestatellc.com

Matthew Mondo

772.286.5744 Office
772.236.7780 Mobile

mmondo@commercialrealestatellc.com

DEMOGRAPHICS

Radius	1 mile	3 miles	5 miles
Population			
2020 Population	10,507	81,556	150,556
2025 Population	12,361	95,949	182,786
2030 Population Projection	14,229	110,447	211,192
Annual Growth 2020-2025	3.5%	3.5%	4.3%
Households			
2020 Households	3,508	27,317	54,742
2025 Households	4,039	31,463	65,896
2030 Household Projection	4,640	36,146	76,135
Annual Growth 2020-2025	4.1%	4.3%	4.8%
Households By Income			
Avg Household Income	\$86,073	\$95,444	\$98,161
Median Household Income	\$69,527	\$79,006	\$79,131
Population Summary			
Median Age	38.20	39.10	42.70
Avg Age	38.20	38.90	42.00

**JEREMIAH BARON
& CO**

COMMERCIAL REAL ESTATE

Office

500 SE Osceola Street
Stuart FL, 34994

www.commercialrealestatellc.com

Matthew Mondo

772.286.5744 Office
772.236.7780 Mobile

mmondo@commercialrealestatellc.com

SITE SURROUNDINGS



**JEREMIAH BARON
& CO**

COMMERCIAL REAL ESTATE

Office

500 SE Osceola Street
Stuart FL, 34994

www.commercialrealestatellc.com

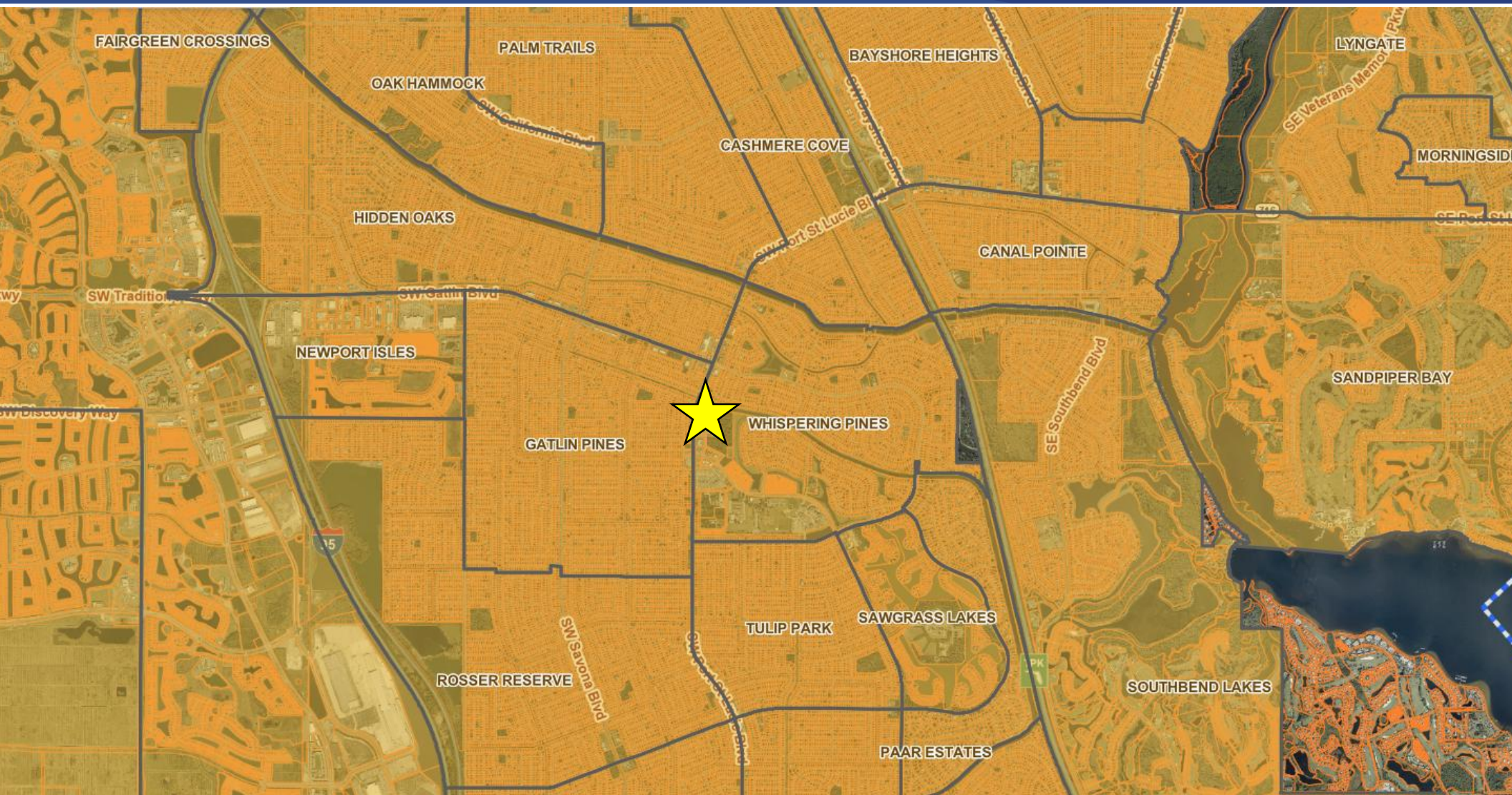
Matthew Mondo

772.286.5744 Office

772.236.7780 Mobile

mmondo@commercialrealestatellc.com

SURROUNDING NEIGHBORHOODS



**JEREMIAH BARON
& CO**

COMMERCIAL REAL ESTATE

Office

500 SE Osceola Street
Stuart FL, 34994

www.commercialrealestatellc.com

Matthew Mondo

772.286.5744 Office
772.236.7780 Mobile

mmondo@commercialrealestatellc.com